



Assembly Instruction

Portable Backstop Unit PP-675





Chapter	Page No.
Introduction.....	2
Size Drawing.....	3
Parts List.....	4
Assemble steps.....	10
Warning.....	15
Operation.....	16
Maintenance.....	17



Introduction

Thank you for purchasing the PP675 mobile backstop unit. To ensure that our equipment can provide you with long-term value, we hereby provide this installation, operation, and maintenance guide. This guide will introduce the correct assembly and installation methods, operating steps, and preventive maintenance of backstop unit.

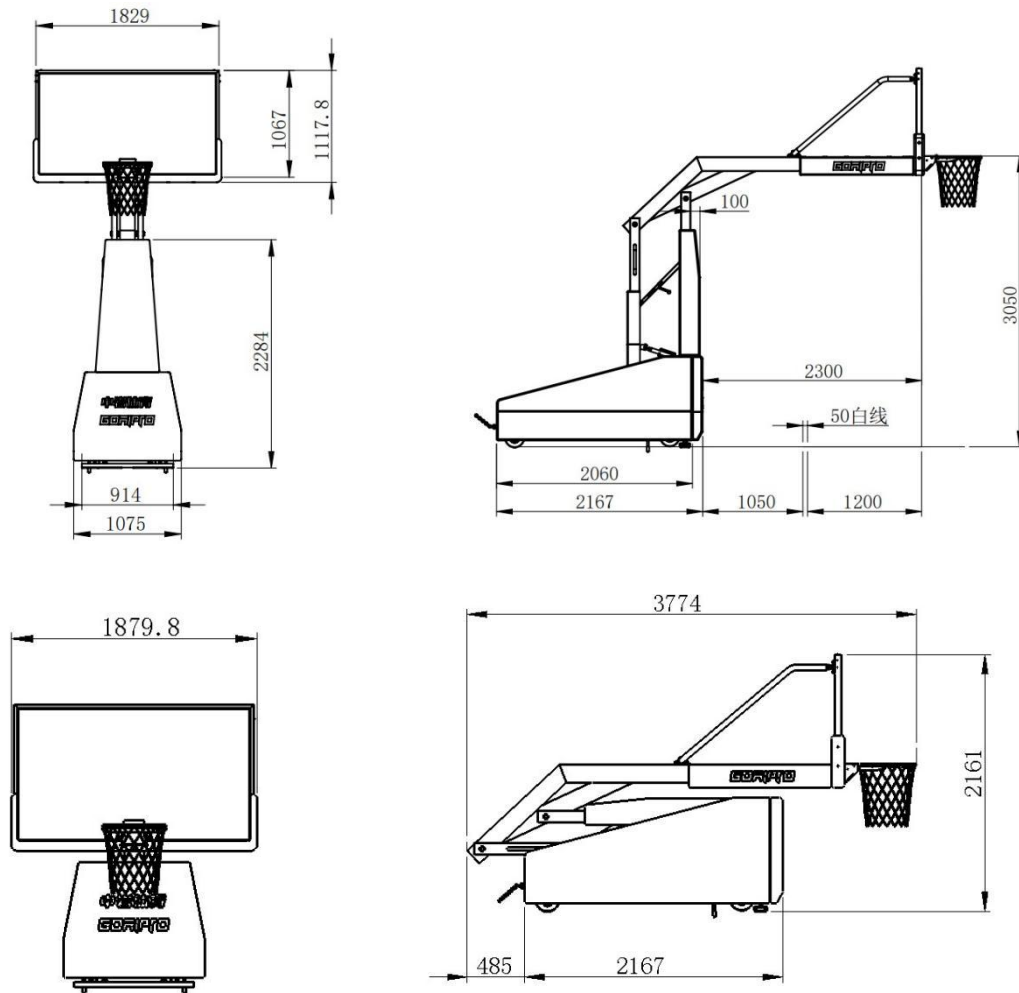
Please note that this guide comes with a list of materials. Before starting assembly and installation, please check if all components listed on the material list are complete.

It is recommended that this backstop unit be assembled and installed by personnel who have received appropriate training. Unless there is appropriate supervision, individuals under the age of 18 are not allowed to assemble or install the device.

To prevent normal wear & tear from shortening the service life of equipment, preventive maintenance checks & repairs should be conducted at least once a year. If the usage rate of the device is high or abnormal, it should be checked more frequently. If any non-conforming items are found, you can order replacement parts from our authorized dealer. When contacting the dealer, please provide the project name & any applicable warranty information.



Size Drawing:



Portable Backstop Unit PP-675

Adjustable height: 2 heights, 9ft / 10ft

Ballast weight: 750 kgs (1650 lbs)



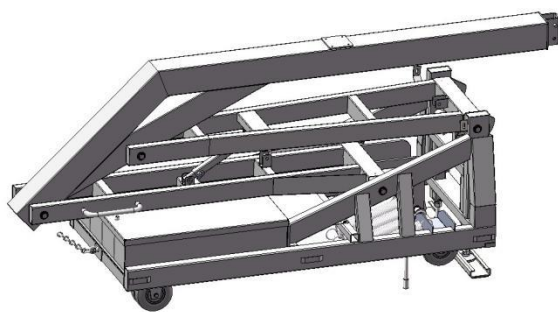
Parts List

Please check if all components listed on the material list are complete.

No.	Drawing No.	Description	Qty
1		Base + Boom	1
2		Rim	1
3	PP675-08-00	Backboard	1
4	PP808-10-00	Backboard connection plate	1
5	PP808-28-00	Pull/Push fix rod	1
6	PP808-29-00	M20 Hook-Left	1
7	PP808-30-00	M20 Hook-Right	1
8	PP808-31-00	Adjust pole of upper arm	2
9	PP808-32-00	Fix plate of upper arm	2
10	PP808-33-00	Upper arm-Left	1
11	PP808-34-00	Upper arm-Right	1
12	PP808-35-00	Upper arm fixed plate(to pole)	2
13	PP808-42-00	Padding plug	6
14	PP675-100-00	Base side fix plate A	2
15	PP675-101-00	Base side fix plate B	2
16	PP675-11-00	Front padding-Bottom	1
17	PP675-12-00	Base padding-Left	1
18	PP675-13-00	Base padding-Right	1
19	PP675-14-00	Front padding-Upper	1
20	PP675-15-00	Back support frame padding	1
21	PP675-18-00	Beam padding	1
22	PP675-19-00	Ballast padding	1
B1	GB/T 5781-2016	Hex Bolt M8*25	35
B2	GB/T 5781-2016	Hex Bolt M8*30	4
B3	GB/T 5781-2016	Hex Bolt M10*30	4
B4	GB/T 5781-2000	Hex Bolt M12*60	1
B5	GB/T 6172.1-2000	Hex nut M20	1
B6	GB/T 6172.1-2000	Hex nut M20	1
B7	GB/T 6172.1-2000	Hex nut M24	2



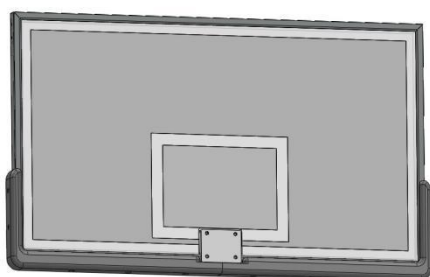
B8	GB/T 5780-2016	Hex Bolt M16*120	1
B9	GB/T 12-1988	Carriage Bolt M10*35	2
B10	GB/T 12-1988	Carriage Bolt M10*110	4
B11	GB/T 97.2-2002	Washer Ø8	39
B12	GB/T 97.2-2002	Washer Ø10	6
B13	GB/T 97.2-2002	Washer Ø16	2
B14	GB/T 93-1987	Locking washer Ø8	39
B15	GB/T 93-1987	Locking washer Ø10	4
B16	GB/T 6170-2000	Nylon nut M10	2
B17	GB/T 6170-2000	Nylon nut M16	1
B18	GB/T 6170-2000	Hex nut M12	1
B19	GB/T 6183.1-2016	Flange nut M10	4



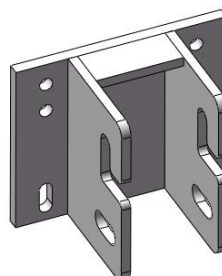
Base + Boom



Rim



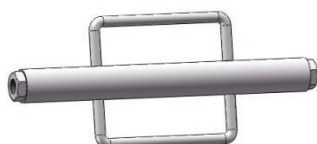
Backboard



Backboard connection plate



M20 Hook- Left



Pull/Push fix pole



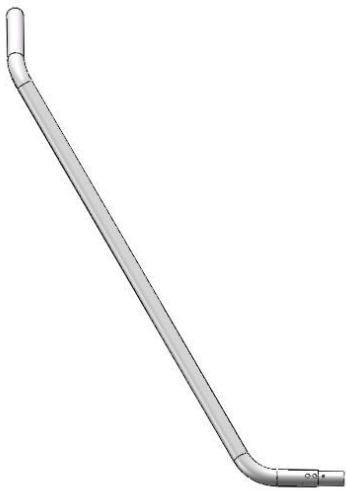
M20 Hook-Right



Adjust pole of Upper arm



Upper arm fix plate



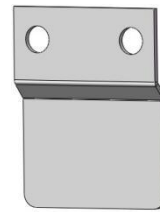
Upper arm-Left



Upper arm-Right



Upper arm fix plate (to pole)



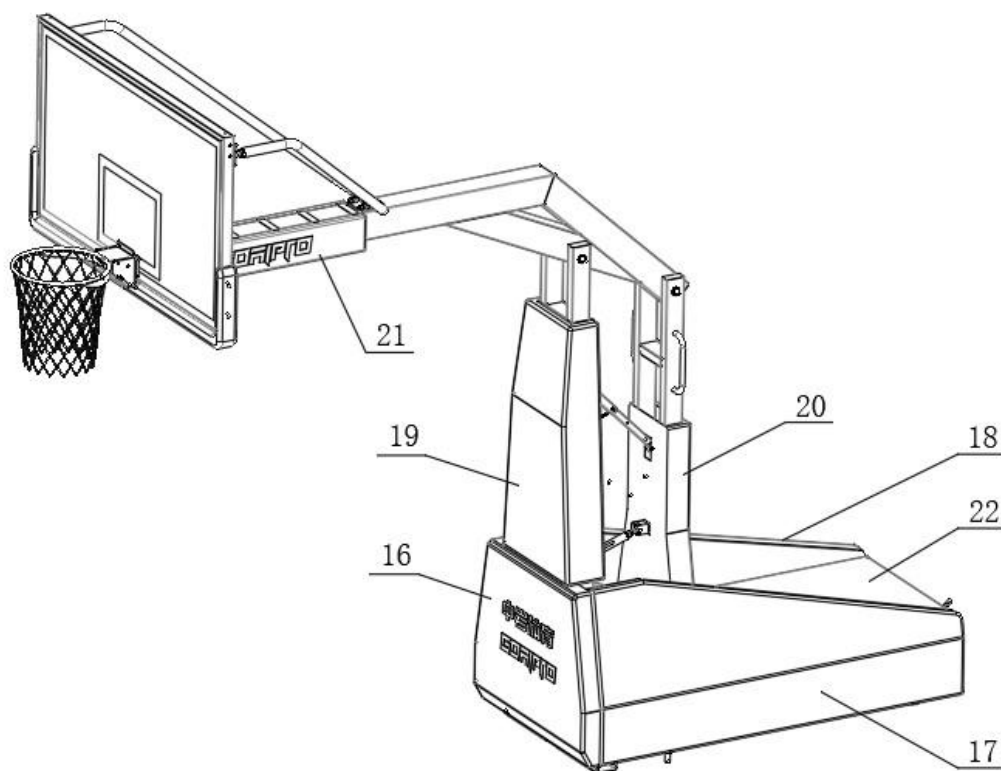
Padding plug



Base side fix plate A



Base side fix plate B



#16 Front padding-Bottom

#17 Base padding-Left

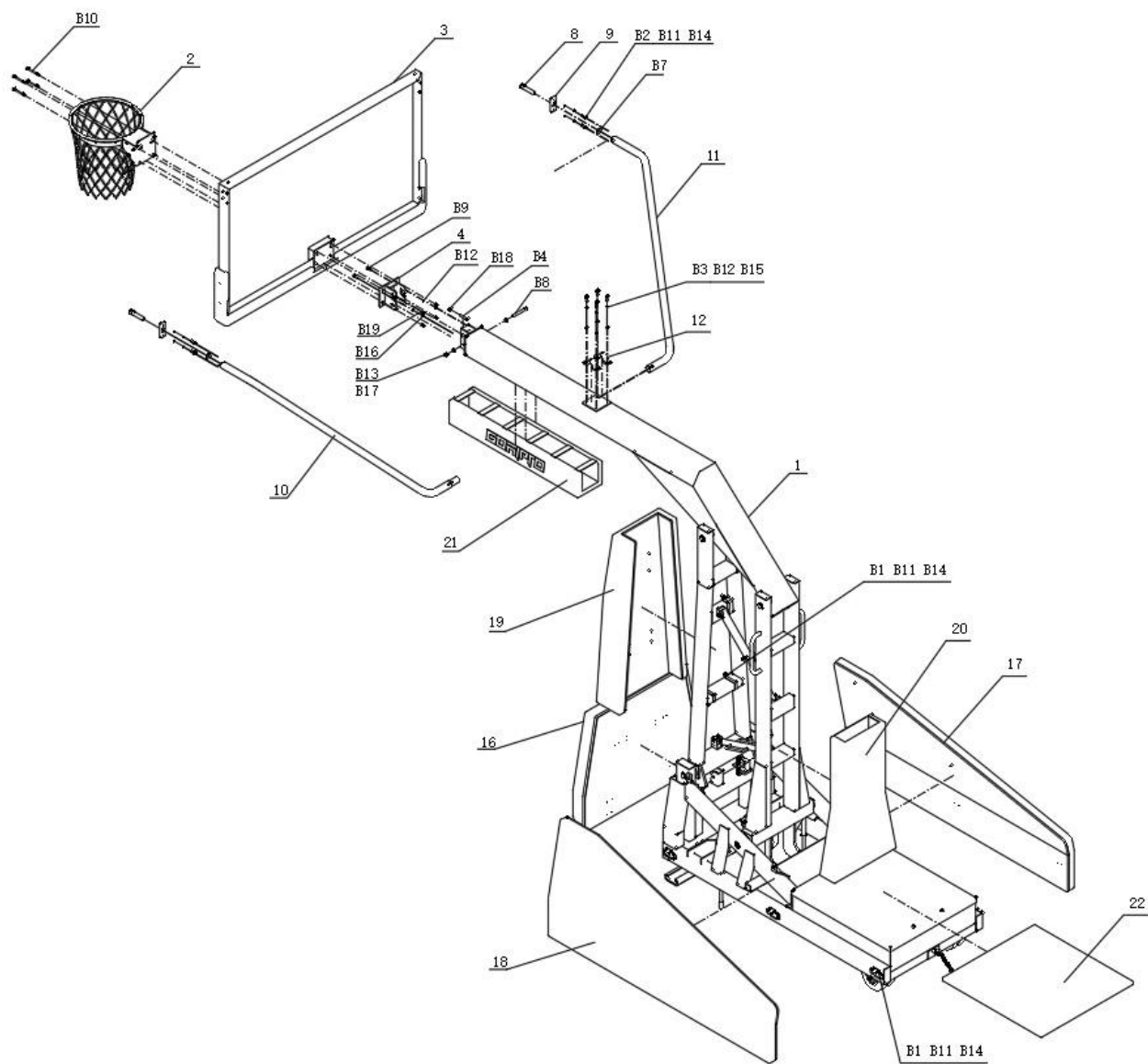
#18 Base padding-Right

#19 Front padding-Upper

#20 Back support frame padding

#21 Beam padding

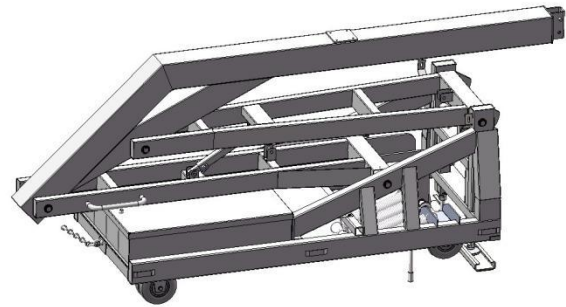
#22 Ballast padding



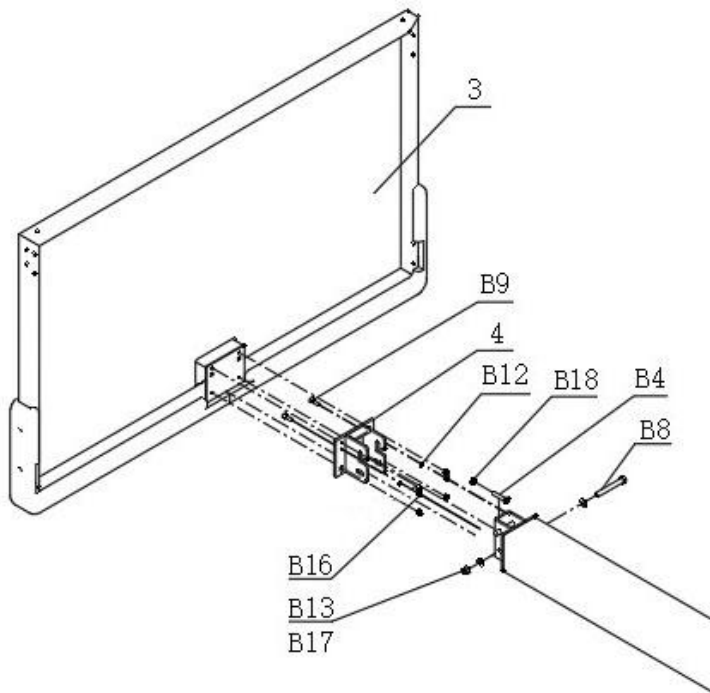


Installation Steps:

1. Remove the base + boom from pallet with forklift, keep the base folded.

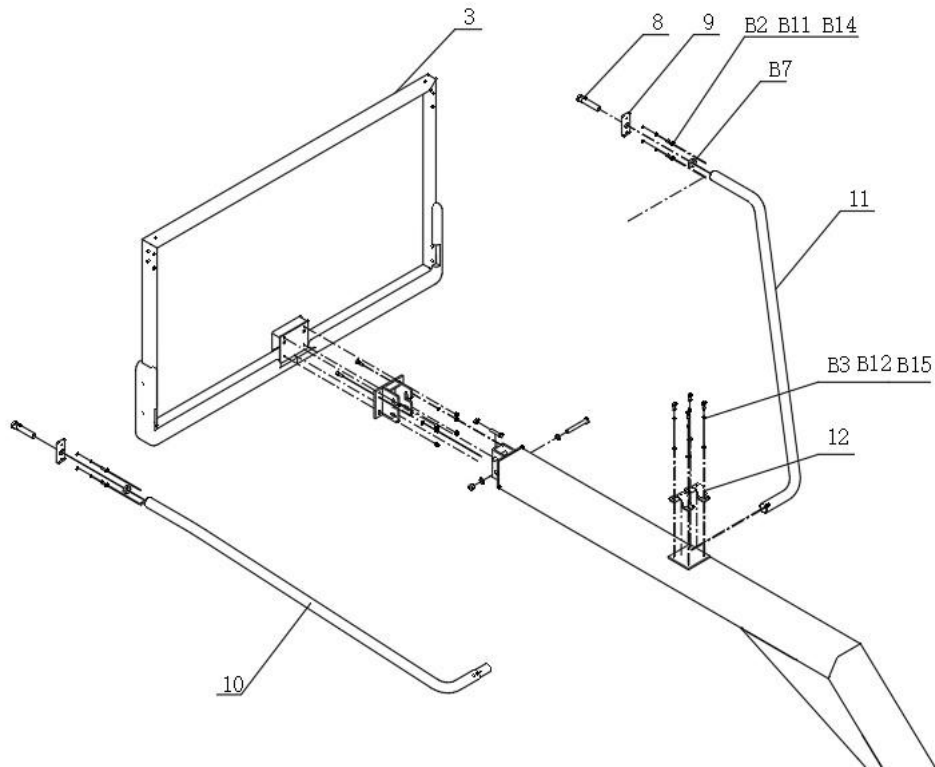


2. Install #4(Backboard connection plate) to pole beam with B8/B13/B17;
Install #3(Backboard) to #4 with B9/B12/B16. Twist B4, adjust the
backboard with right vertical through twist B4, then tight tightly B18.

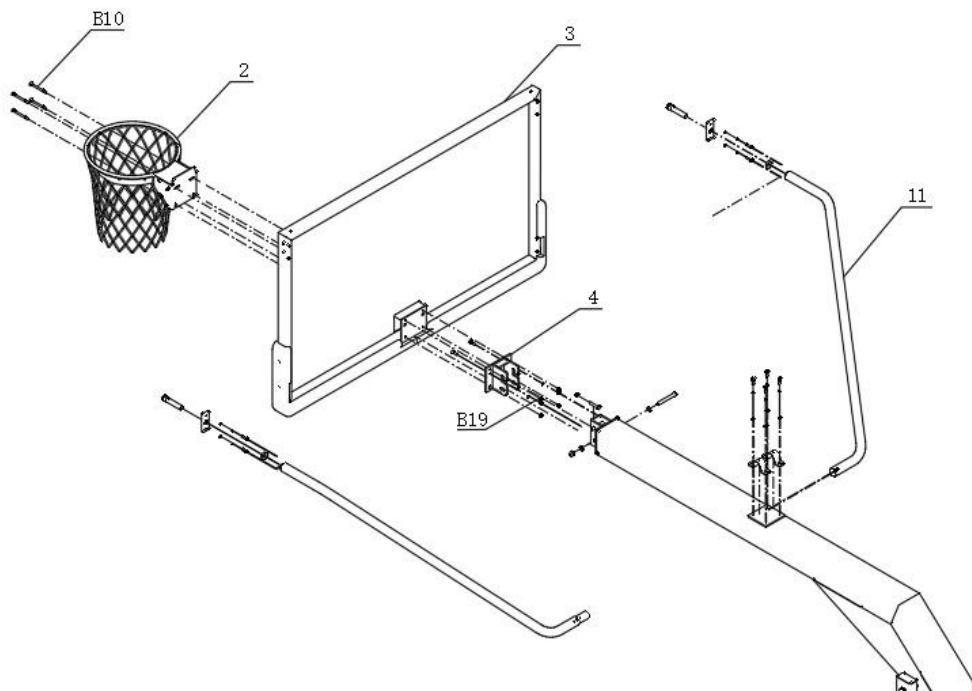




3. Install #8	 to #3(Backboard) with B2/B11/B14/B7 (2 sides), fix #10/#11 to #8 & #12, tight #10/#11 to #12 with B3/B12/B15,twist #8 to adjust Backboard in right horizontal & vertical level, then tight tightly with B7.

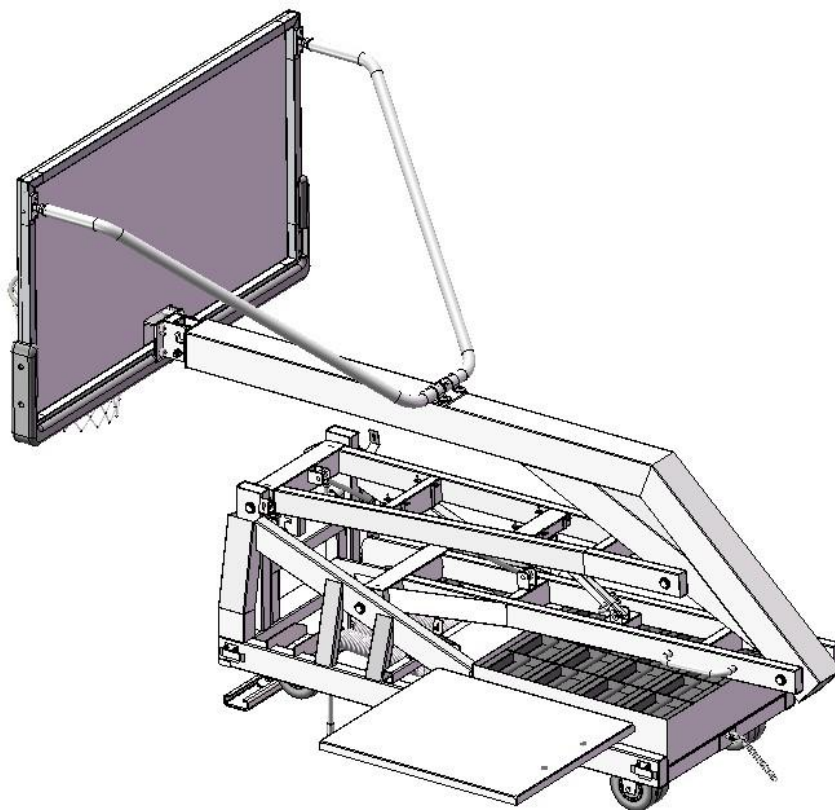


4. Install Rim (#2) to Backboard (#3) with B10/B19.



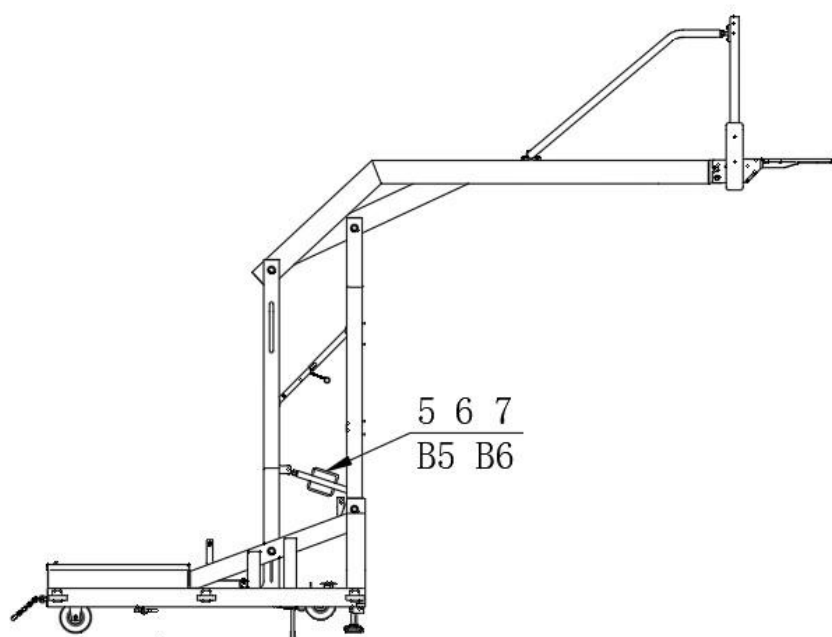


5. Loosen the black belt little bit, pull out the safety pin. Lift the boom pole little up, open the ballast, and put weights inside tanks.

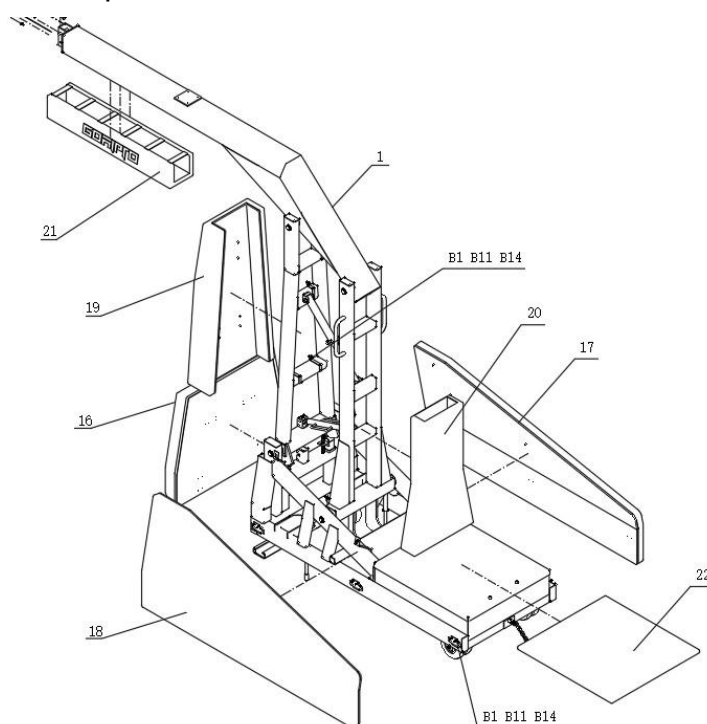




6. First crank the whole system needs two professional personnel, make sure the whole system full open and insert safety pin. Tighten with 5#, 6#, 7#, lock tight with B5, B6.

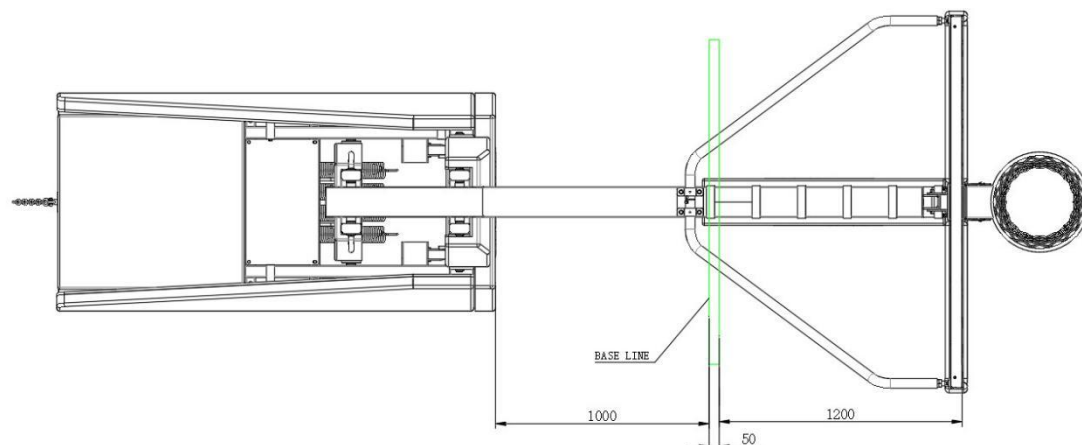


7. Install all pads as shown below:

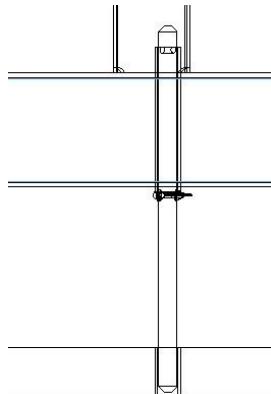




8. Adjust the front bottom foot height to confirm the height from rim to ground in 3050mm.



9. Move hoops to playground & keep steady. Insert socket into floor, insert position pin to socket to make the hoops steady.





Warning:

1. The spring of the backstop unit has been adjusted to a specific weight at our factory, so do not open the limit pin and black strap before installing the backboard.



2. After installing the backboard, you cannot directly stand the backstop unit upright. You need to first pull out the limit pin, open the black strip a little, lift the handle slightly with two people, take out the ballast cover, and put all the weights into the ballast before you can fully lift the backstop unit stands upright.



Operation:

1. Before operating & installation, please read all precautions and information labels.
2. Place the backstop unit on court with the locating pin facing the socket in the floor.
3. Secure the chain behind the backstop unit to the court floor.
4. Release the black strip, pull out the limit pin, and lift the backstops with the handle. Raise to the appropriate height (9 feet or 10 feet), insert the limit pin, install the pull/push fixing rod, and tighten it.
5. Measure the height from rim to the ground. If it is not appropriate, fold the backstop unit and adjust the front feet to the appropriate height. Lift the backstop unit in the same way and lock it.



Maintenance:

1. The equipment should be thoroughly inspected during use to ensure that catastrophic failures do not occur during use between two annual inspections.
2. It is recommended to conduct an annual inspection to determine if there are any bolts or other hardware that are worn or loose.
3. During an annual inspection:
 - Check all connections to ensure they are securely fastened
 - Check all spring adjustment bolts to ensure they are securely fastened and no moving
 - Check if the pad is worn
 - Any loose bolts or nuts should be tightened
 - Replace any missing or worn parts