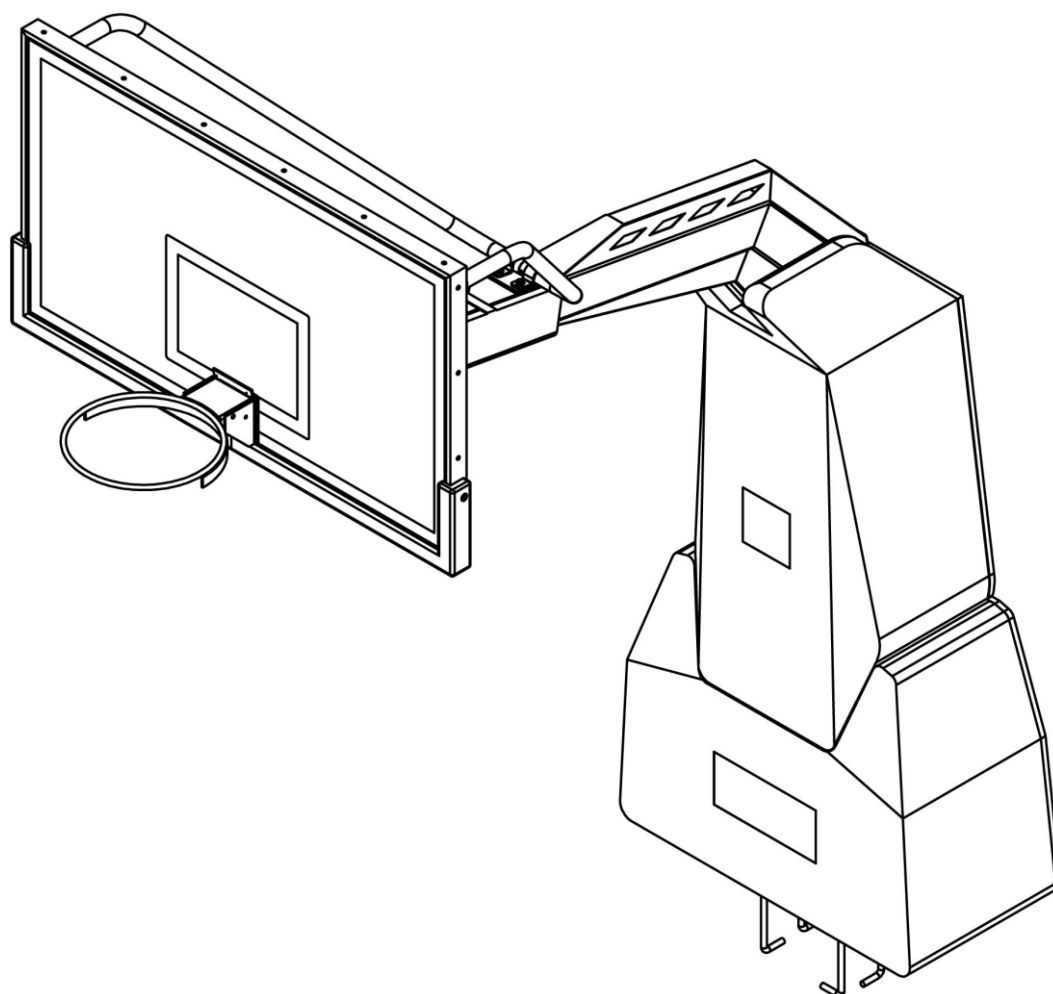




In-ground Backstop Unit--FH8000

Installation Instructions





Safety Instruction

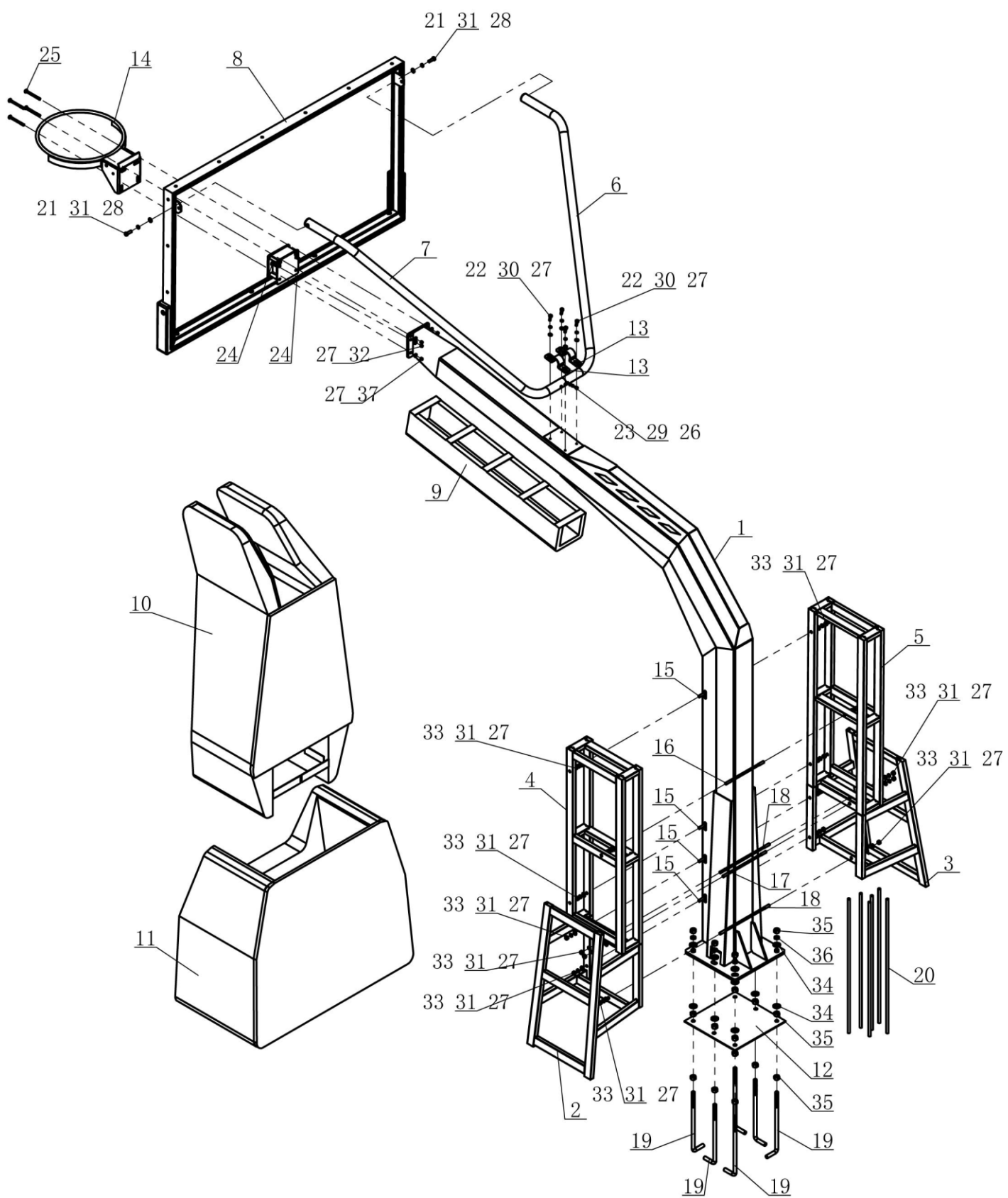
IMPORTANT

It is the responsibility of purchaser to ensure that all installers and players fully comply with the detailed instructions set forth in this product installation manual.

Product assembly should be carried out exactly as instructed and owner supervision of use and installation is required to prevent risk of product malfunction or risk of injury.

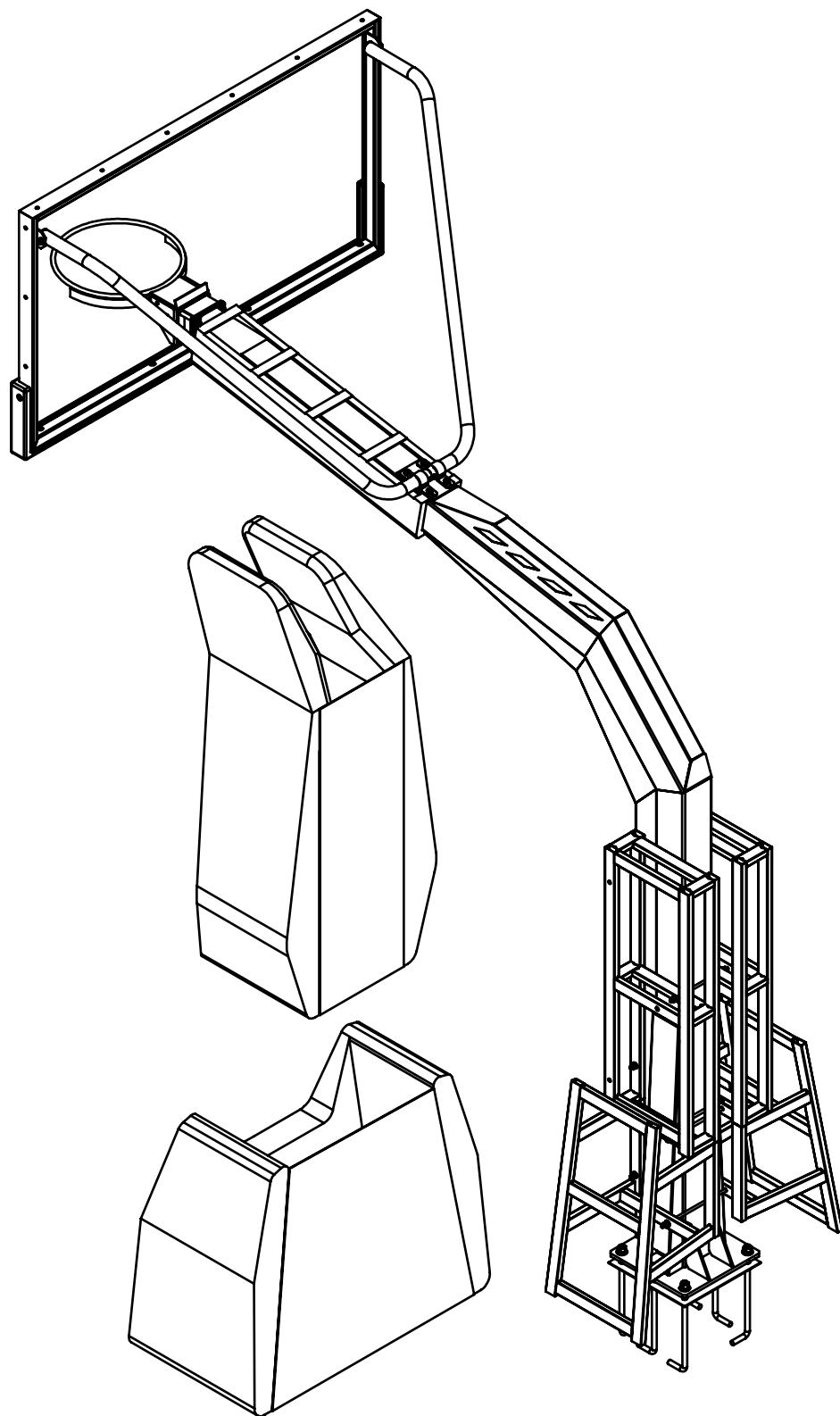
- All tools used to assemble this product should be used in compliance with manufacturer's guidelines.
- Installation of this product will require heavy lifting and bending. Any person that is not capable of such activity should not participate in the installation of this product.
- If using a ladder during assemble, use extreme caution and refer to the warnings and cautions on the ladder.
- Due to the size and weight of this product, we recommend at least (2) competent adults are present.
- Do not use parts not included with our system. Failure to follow this requirement could cause product malfunction and will void warranty of this product.
- Keep all organic material away from parts and components to avoid corrosion.
- Do not climb on any part of the basketball system as it was not intended for this activity.
- Do not use the basketball system as a lift or to hoist anything.
- Do not allow children to adjust basketball system.
- Check the basketball system on a regular basis to ensure that there are no signs of deterioration or corrosion, loose hardware or damaged parts. If you see any signs of damage perform maintenance or contact **supplier** for the replacement.
- Failure to follow these safety instruction could result in product malfunction, serious injury, or even death.

Keep this installation manual as reference for your safety and the safety of those playing on the basketball system.

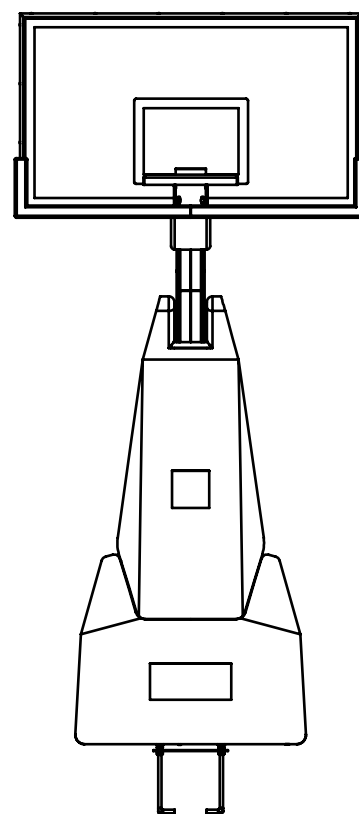
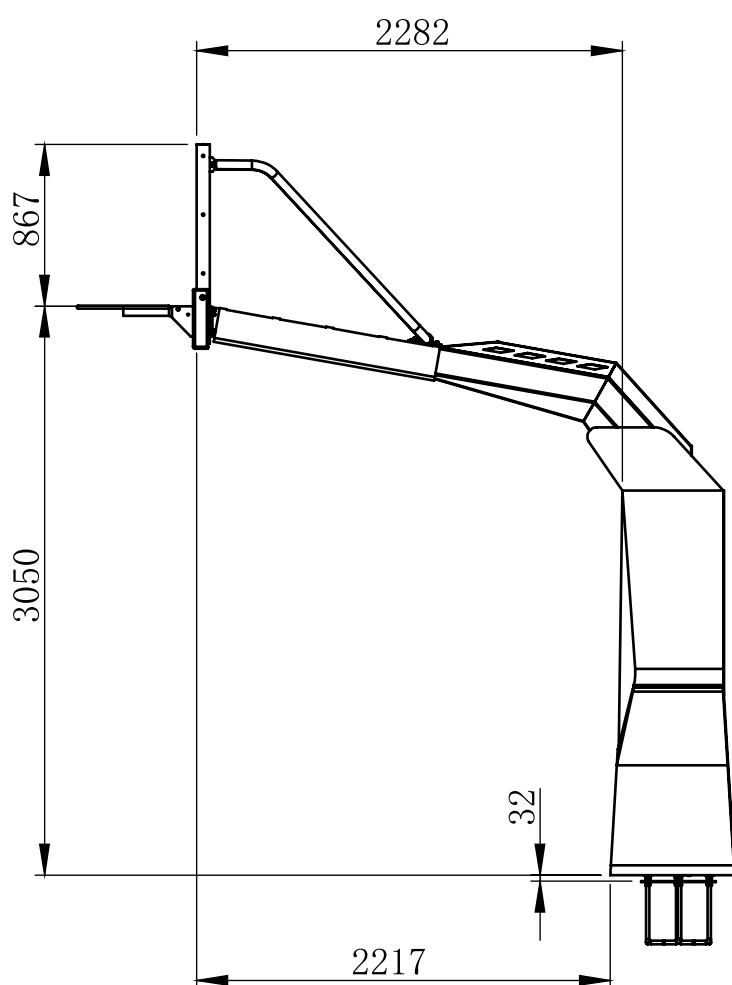


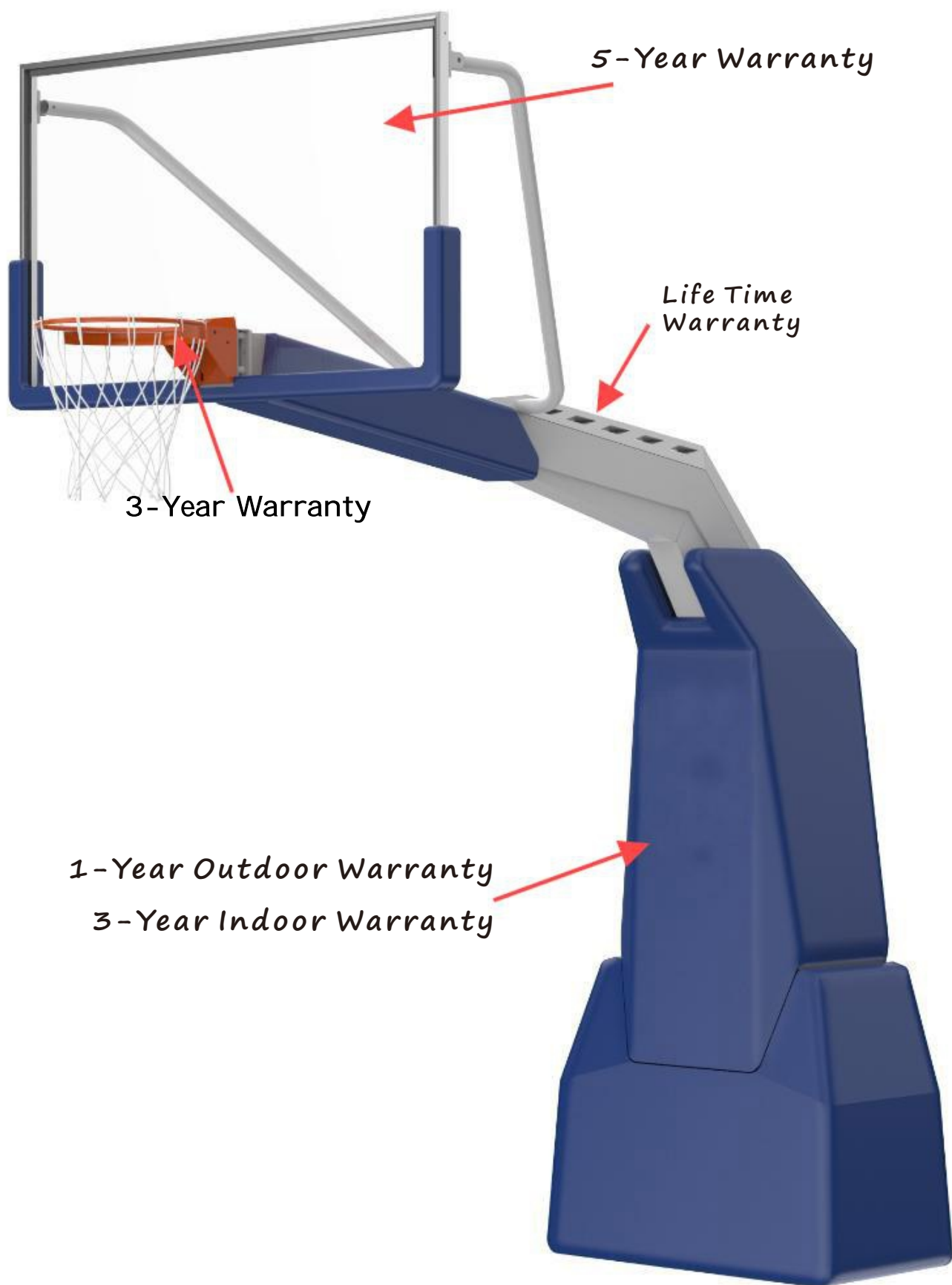


Item	Description	Qty	Item	Description	Qty
#1	Pole Frame	1	#20	Rebar Ø14*900	2
#2	Lower extension frame-Right	1	#21	Hex bolt M12*35	6
#3	Lower extension frame-Left	1	#22	Hex bolt M10*30	17
#4	Upper extension frame-Right	1	#23	Hex bolt M8*16	8
#5	Upper extension frame-Left	1	#24	Carriage bolt M10*30	2
#6	Upper extension-Left	1	#25	Carriage bolt M10*110	4
#7	Upper extension-Right	1	#26	Flatt washer Ø8	1
#8	Backboard	1	#27	Flat washer Ø10	6
#9	Upper beam pad	1	#28	Flat washer Ø12	18
#10	Upper pad	1	#29	Locking washer Ø8	1
#11	Bottom pad	1	#30	Locking washer Ø10	4
#12	Anchor template	1	#31	Locking washer Ø12	16
#13	Upper support tube fix plate	2	#32	Nylon nut M10	2
#14	Basketbalal rim	1	#33	Hex nut M12	18
#15	Equal length Double studs1(M12*220)	4	#34	Large washer Ø40*Ø19*4	12
#16	Equal length Double studs1(M12*300)	1	#35	Hex nut M18	18
#17	Equal length Double studs1(M12*340)	1	#36	Locking washer Ø18	6
#18	Equal length Double studs1(M12*390)	1	#37	Flange nut M10	4
#19	J-bolts	6			



**Note: When install the anchor plate,
pls be aware and adjust the height with 3050mm.**





5-Year Warranty

Life Time
Warranty

3-Year Warranty

1-Year Outdoor Warranty
3-Year Indoor Warranty

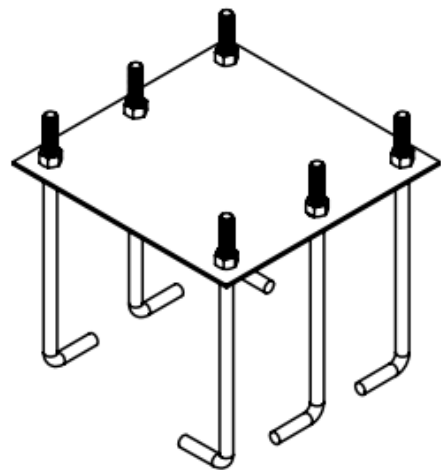
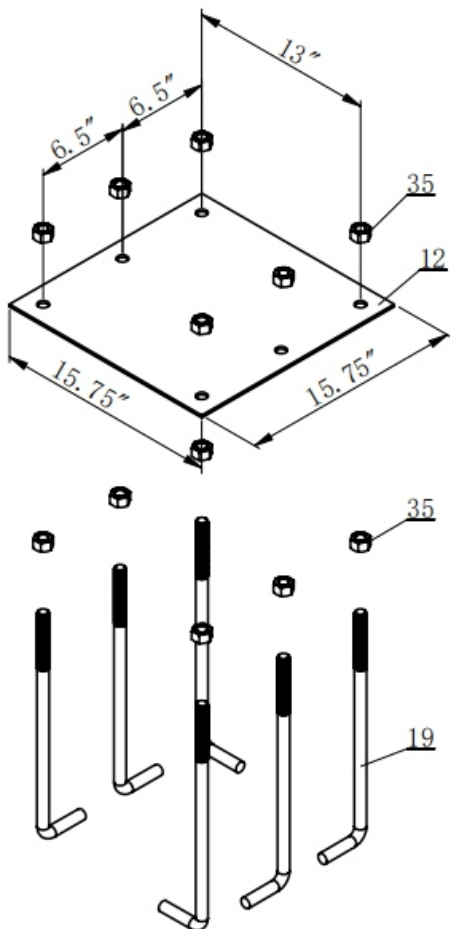
ANCHOR INSTALLATION

Step 1 Anchor Assembly

Twist 6 Hex nuts (#35) to the bottom of threads on 6 J-bolts(#19).

Place these J-bolts through the holes on the black anchor template and install 6 Hex nut(#35) and tighten.

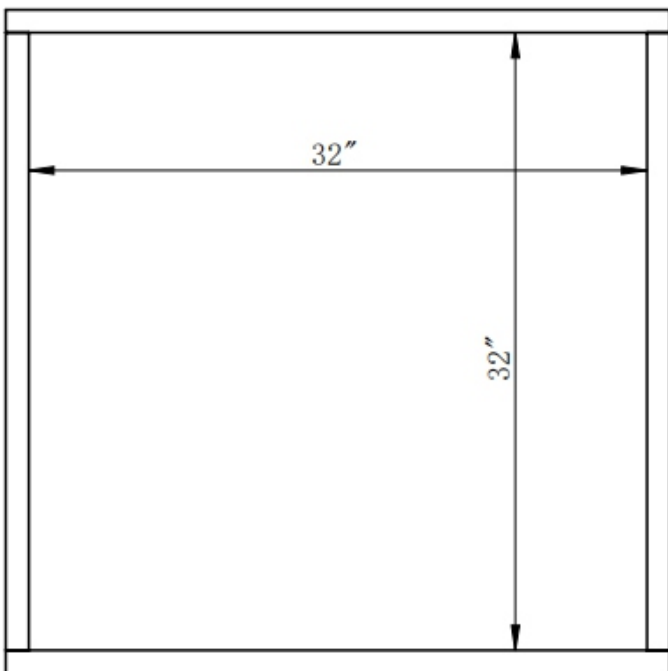
The bottom of J-bolts should be positioned as shown.



Step 2 Anchor Installation

WARNING

The weight of the system does not allow it to be anchored to an existing concrete pad.



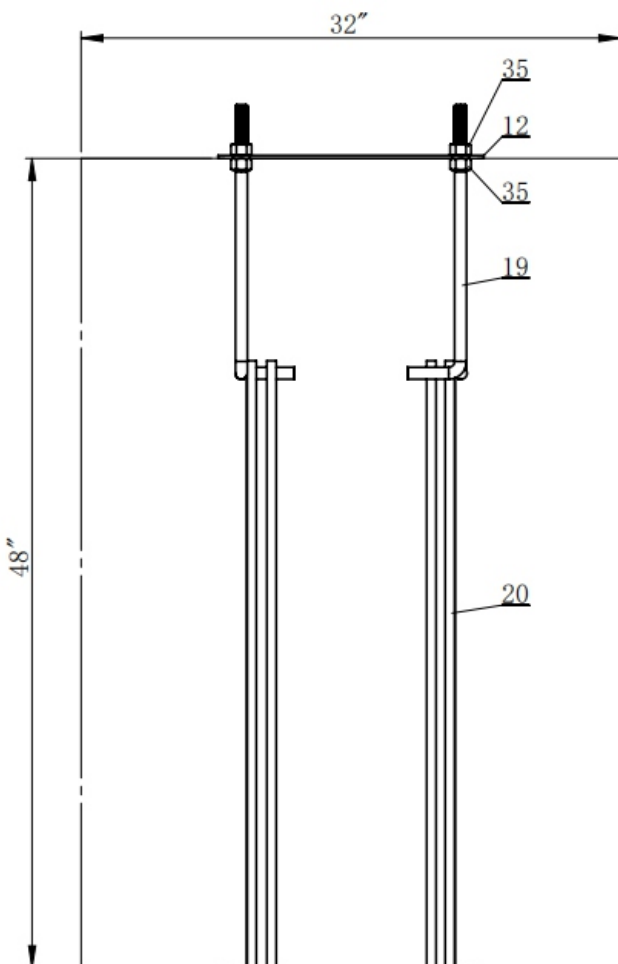
Dig a hole 32"*32"*48" deep.

Use 2"x4" lumber to form the top of the hole for finished aesthetics. The top edge of the form boards should be level with the playing surface.

⚠ IMPORTANT

Be sure to have the proper amount of concrete on hand so the full amount of concrete can be poured in one session.

If concrete is not poured monolithically instability can occur to the base of the system resulting in system failure.



Place assembled anchor system in hole to the point where bottom of black plate is flush with the top of the finished concrete.

The 6 Hex nuts(#35) on the bottom of the anchor plate will forever be placed in the concrete.

Mix(27-29) 80 lbs. bags of concrete with a strength of 4000 PSI or greater in a wheel barrow or cement mixer and pour in pre-dug hole about half full.

Agitate concrete with shovel or mixing rod to ensure proper fill.

Place 6 pcs of Rebar (#20) in the middle of hole about 6"-8" apart to create a square in the middle of the hole.

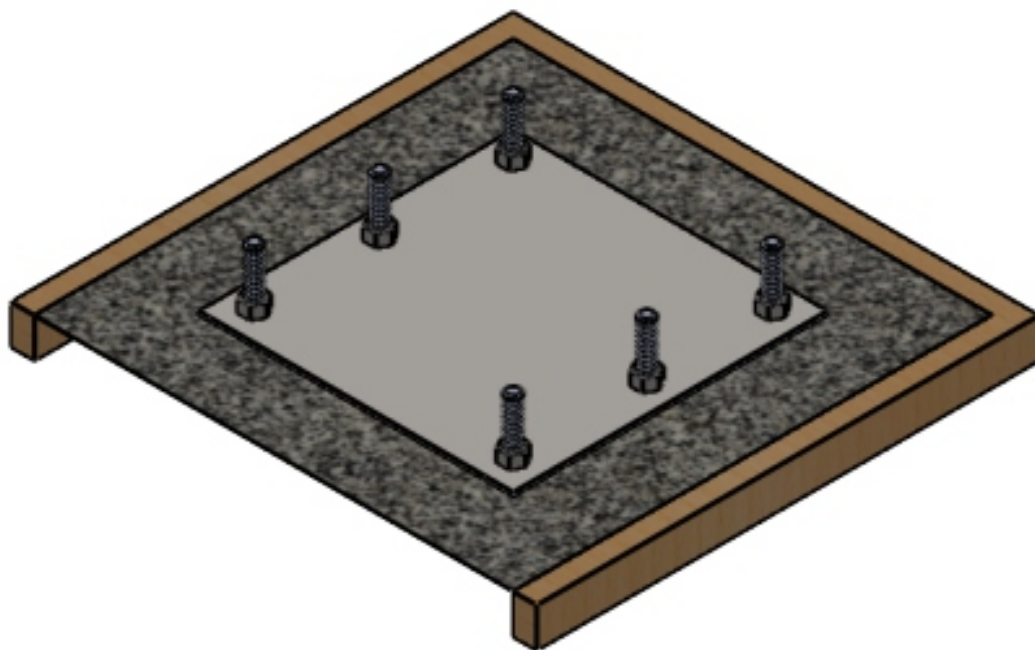
Pour the remaining concrete in the hole until it is flush with the top of the form boards and smooth with a cement trowel.

Step 3 Placement and Leveling

Use a tape measure to verify that the anchor is square to the playing surface.

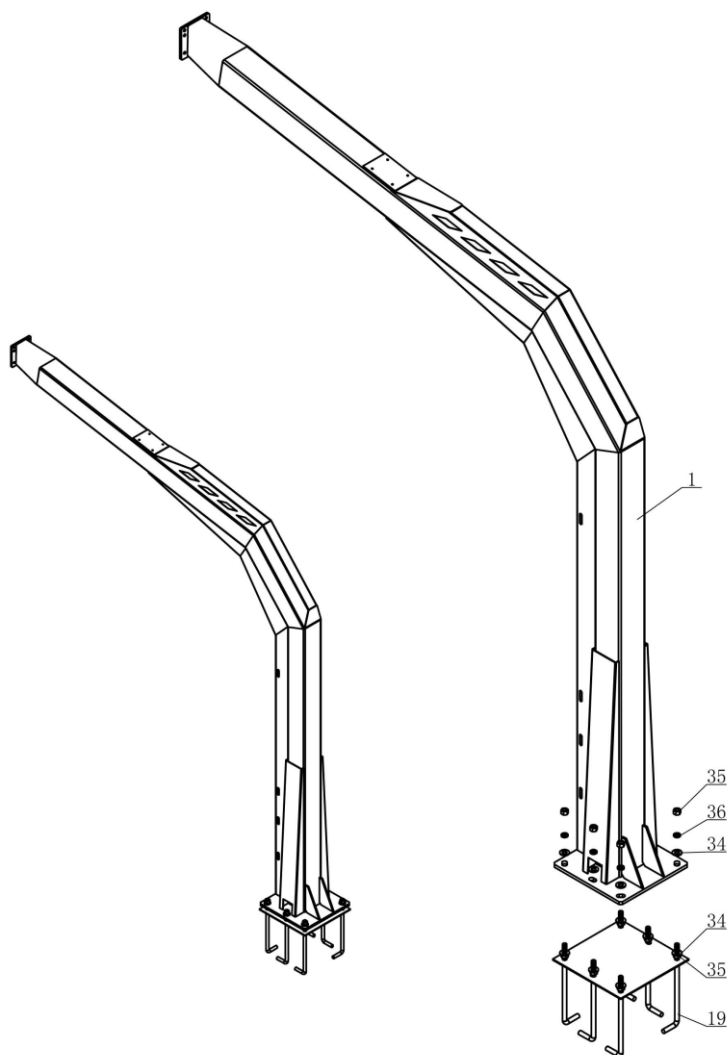
Use a level to verify that anchor plate is level from front to back and side to side.

Allow the concrete to cure for a minimum of 3 Days.



Noted: After finished this step, the anchor template is about 2in lower than play surface, which is suitable to adjust the whole height to 3048mm/10ft.

BASKETBALL SYSTEM INSTALLATION

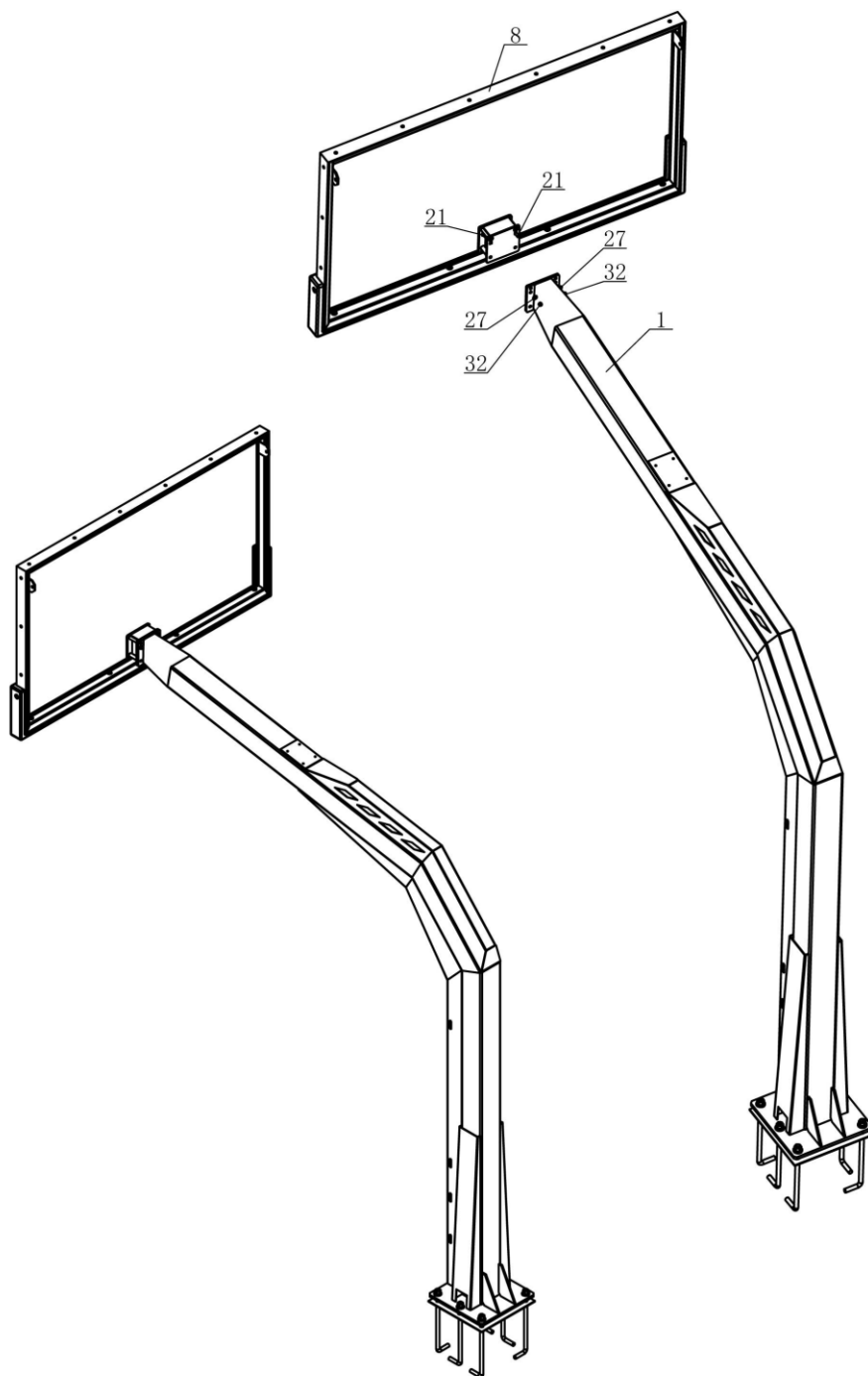


Step 1

Install 6 large washer(#34) on top of anchor bolts and install main pole frame(#1) as shown with welded bracket facing away from the playing surface.

Place 6 large washer(#34) on the top of base plate followed by 6 locking washer(#36) and 6 Hex nut(#35) and tighten.

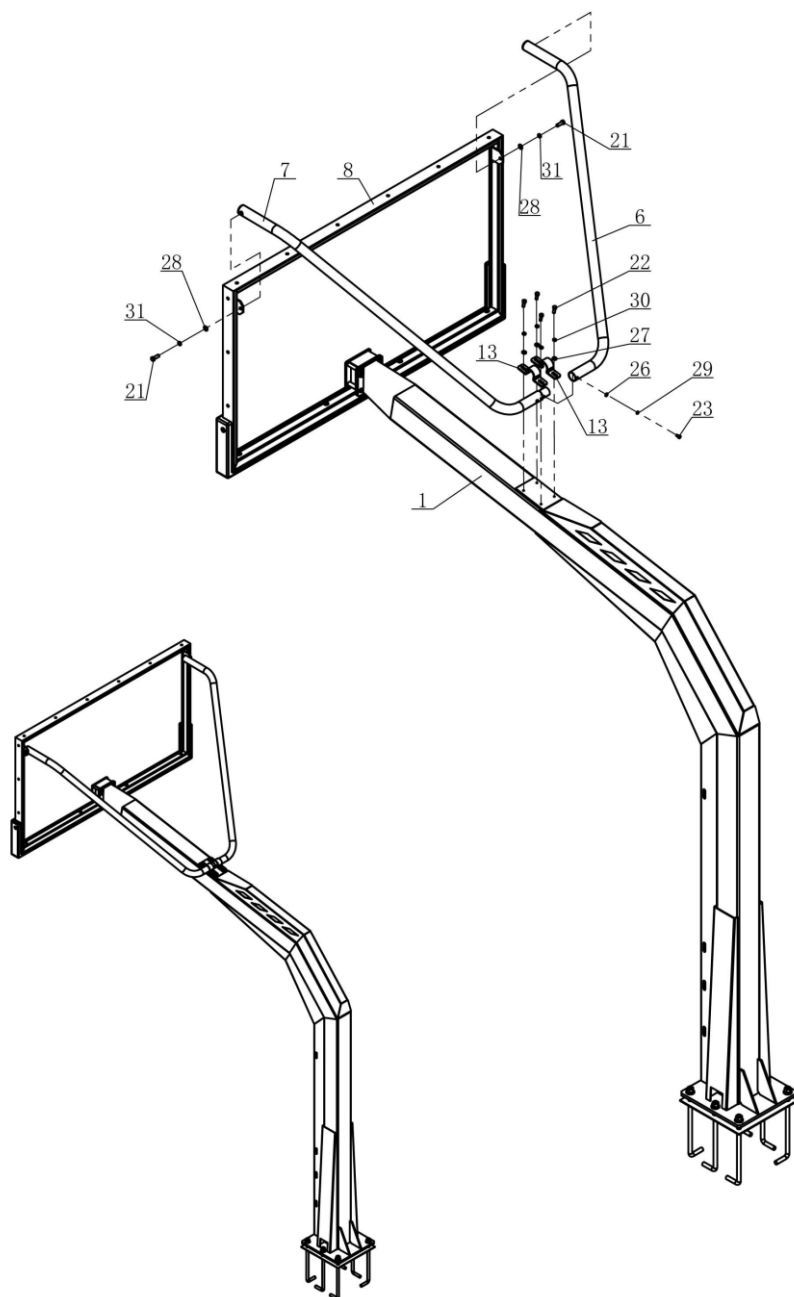
Make sure that base plate is square to playing surface.



Step 2

Install Backboard (#8) to Pole frame (#1) with Hex bolt (#21), Flat washer (#27) and Nylon nut (#32).

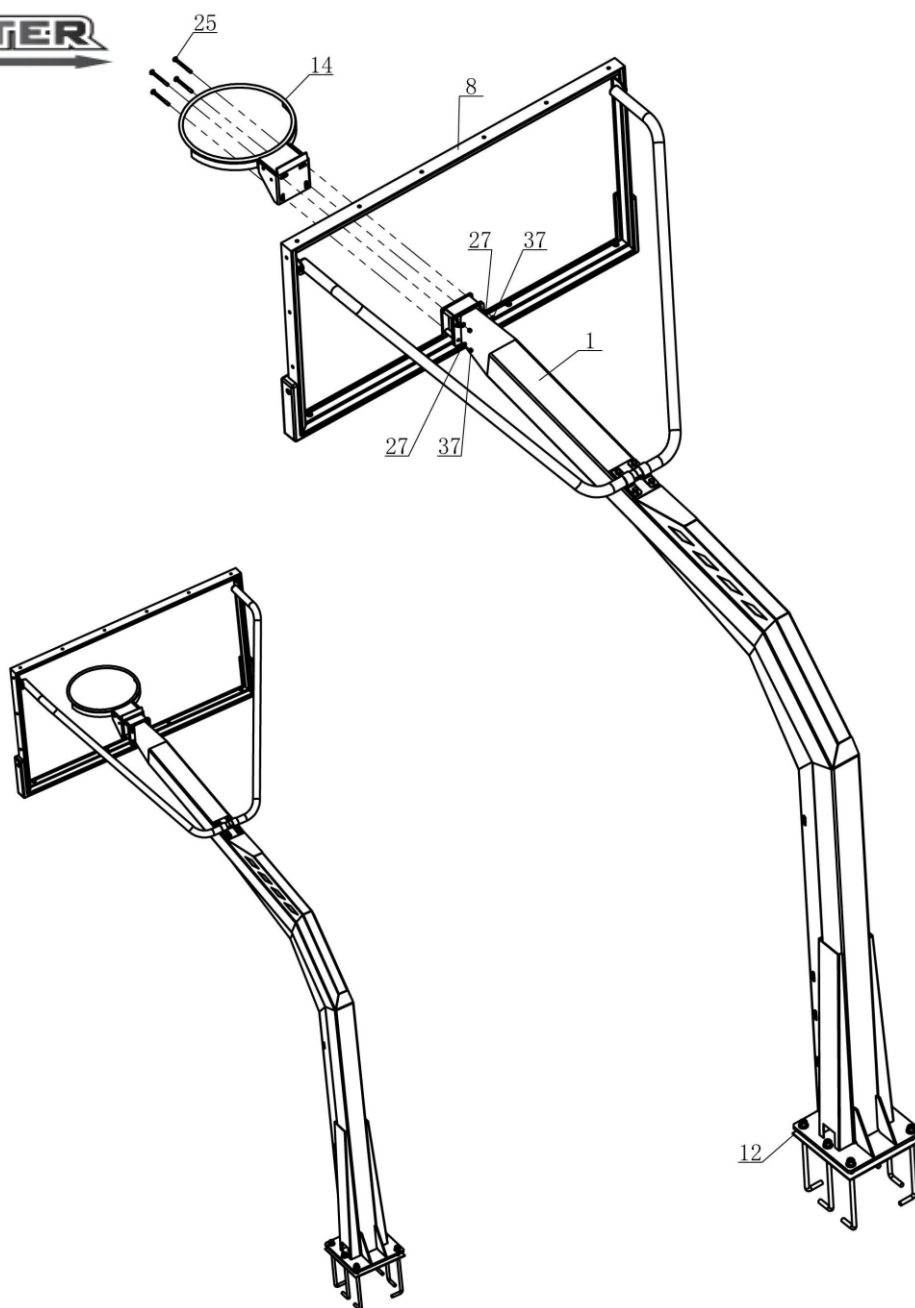
Note: Pls make sure Backboard in right horizontal position, then tighten all bolts.



Step 3

1. Fix Upper extension -Left(#6)and Upper extension-Right(#7) together with M8 Hex bolt(#23), 8mm Locking washer (#29) and 8mm Flat washer(#26).
2. Fix #6 & #7 and Backboard (#8) together with M12 Hex bolt (#21), 12mm Locking washer (#31) and 12mm Flat washer (#28).
DO NOT tighten the bolts.
3. Fix #6,#7 and Pole frame (#1) with M10 Hex bolt(#22), 10mm Locking washer(#30),10mm Flat washer (27) and Upper support tube fix plate (#13).

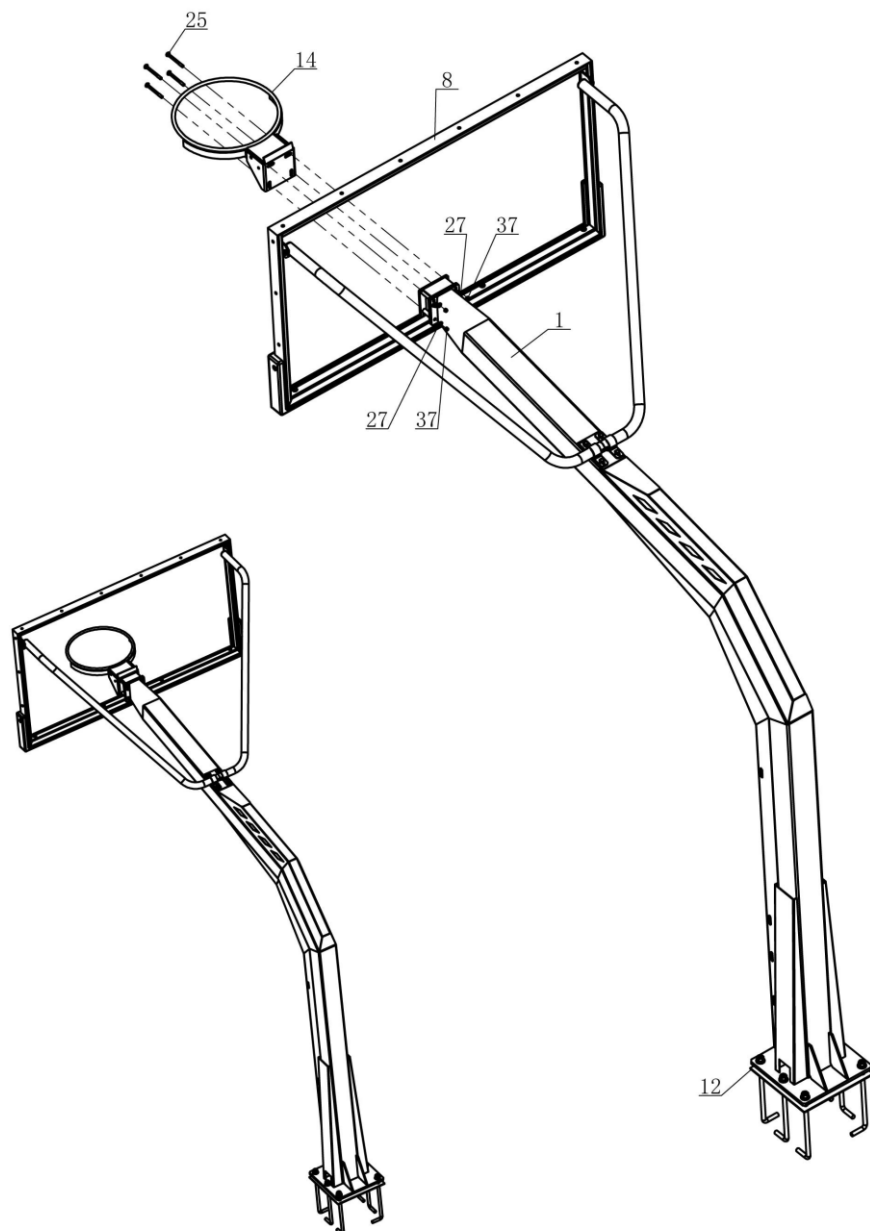
Adjust the vertical and horizontal level of Backboard.



Step 4

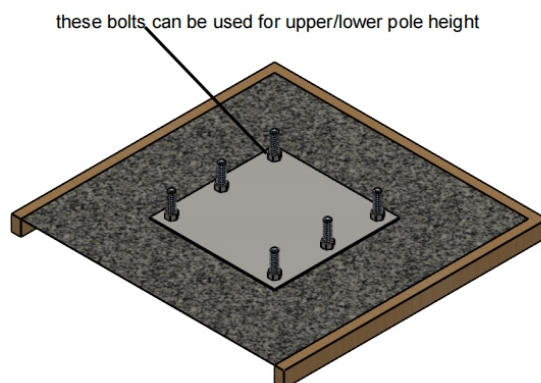
Install Rim (#14) to Backboard (#8) with Carriage bolt (#25), Flat washer (#27) and Flange bolt (#37), make sure rim + backboard fixed into pole frame (#1)

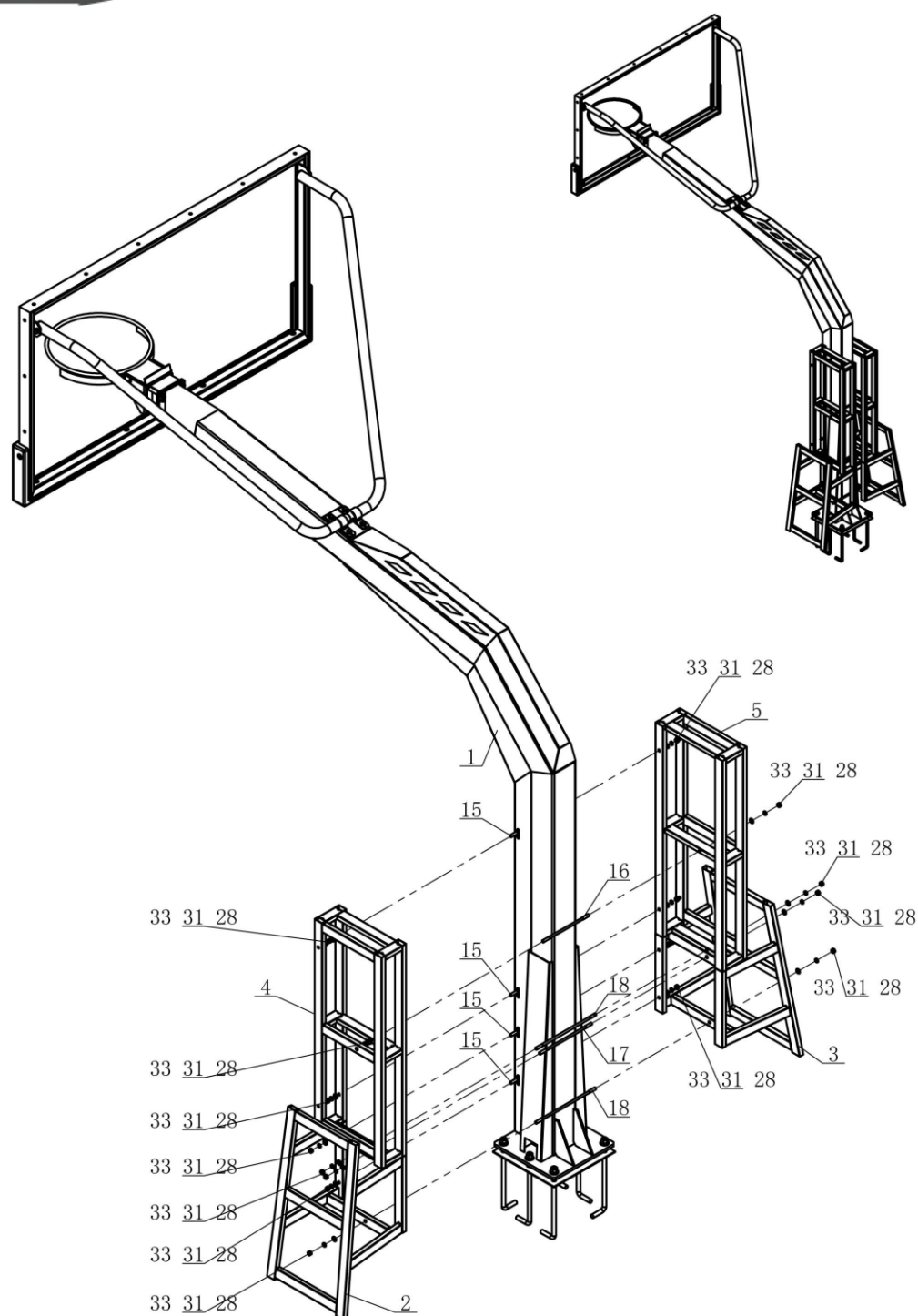
Adjust the height from Rim (#14) to Anchor plate (#12) is 3050mm.



In this step, as the anchor template is 2in lower than play surface, there's 2 ways to adjust heights:

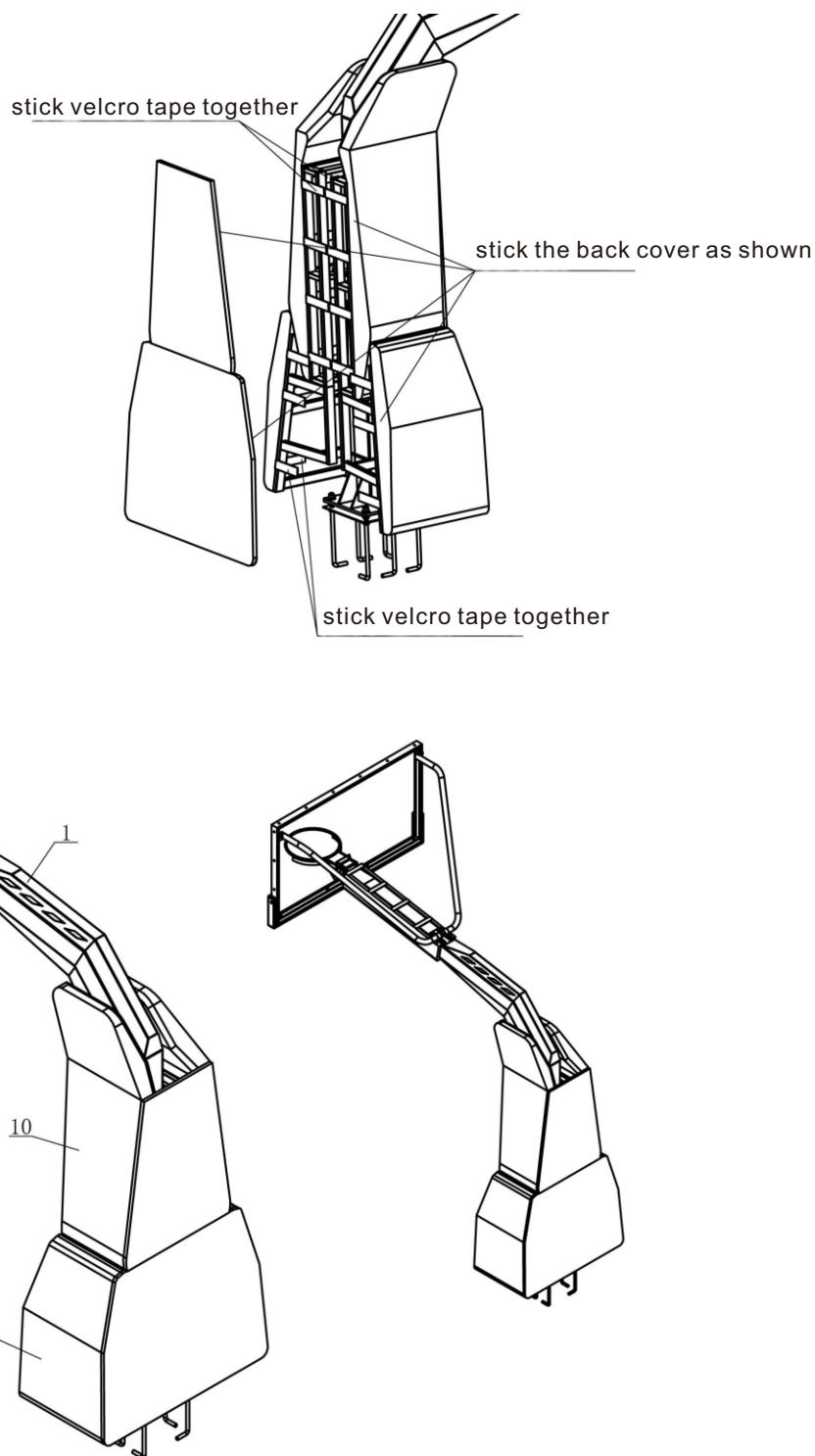
1. Adjust the Pole base J-bolt(#19) to upper or lower height +/- 1in;
2. When the height adjusted, we also can adjust the 2 bolts close to the playground upper or lower the height +/- 2in.





Step 5

Fix Upper extension frame-Right (#4) +
Upper extension frame-Left (#5) to Pole frame (#1)
with Hexagonal nut(#33) + Locking washer(#31) +
Flat washer (#28) +
Equal length double stud 1/2/3/4(#15,#16,#17, #18).



Step 6

Install Upper beam pad (#9), Front upper pad (#10), Front bottom pad (#11) as shown.