



# *Assembly Instruction*

## *Portable Backstop Unit PP-810*





<b>Chapter</b>	<b>Page No.</b>
<b>Introduction.....</b>	<b>2</b>
<b>Parts List.....</b>	<b>3</b>
<b>Assembly steps.....</b>	<b>8</b>
<b>Warning.....</b>	<b>15</b>
<b>Operation.....</b>	<b>16</b>
<b>Maintenance.....</b>	<b>17</b>



## **Introduction**

Thank you for purchasing the PP-810 mobile backstop unit. To ensure that our equipment can provide you with long-term value, we hereby provide this installation, operation, and maintenance guide. This guide will introduce the correct assembly and installation methods, operating steps, and preventive maintenance of this backstop unit.

Please note that this guide comes with a list of materials. Before starting assembly and installation, please check if all components listed on the material list are complete.

It is recommended that this backstop unit be assembled and installed by personnel who have received appropriate training. Unless there is appropriate supervision, individuals under the age of 18 are not allowed to assemble or install the device.

To prevent normal wear & tear from shortening the service life of equipment, preventive maintenance checks & repairs should be conducted at least once a year. If the usage rate of the device is high or abnormal, it should be checked more frequently. If any non-conforming items are found, you can order replacement parts from our authorized dealer. When contacting the dealer, please provide the project name & any applicable warranty information.



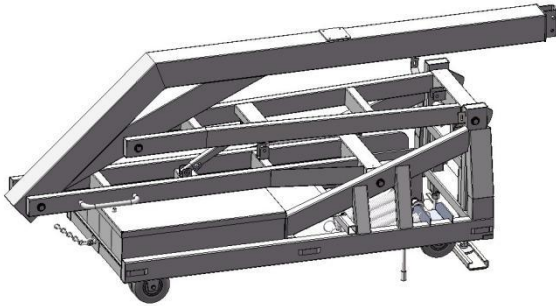
## Parts List

Please check if all components listed on the material list are complete.

No.	Drawing No.	Description	Qty
1		Base + Boom	1
2		Rim	1
3	PP675-08-00	Backboard	1
4	PP810-10-00	Backboard connection plate	1
5	PP810-28-00	Pull/Push fix rod	2
6	PP810-29-00	M20 Hook-Left	2
7	PP810-30-00	M20 Hook-Right	2
8	PP808-31-00	Adjust rod of upper arm	2
9	PP808-32-00	Fix plate of upper arm	2
10	PP808-33-00	Upper arm-Left	1
11	PP808-34-00	Upper arm-Right	1
12	PP808-35-00	Upper arm fixed plate(to pole)	2
13	PP810-11-00	Front bottom padding	1
14	PP810-12-00	Base padding-Left side	1
15	PP810-13-00	Base padding-Right side	1
16	PP810-14-00	Front upper padding	1
17	PP810-15-00	Back support frame padding	1
18	PP810-16-00	Pivot padding-Right	1
19	PP810-17-00	Pivot padding-Left	1
20	PP810-18-01	Beam padding	1
21	PP810-19-00	Ballast padding	1
22	PP810-39-00	Base side fix plate A	2
23	PP810-40-10	Base side fix plate B	2
24	PP810-36-00	Front frame fix plate	2
25	PP810-41-00	Connection rod	4
26		24 seconds timer	1
27		Timer rod	1
28	PP810-42-00	Padding plug	6
B1	GB/T 5781-2016	Hex Bolt M8*25	43
B2	GB/T 5781-2016	Hex Bolt M8*30	4
B3	GB/T 5781-2016	Hex Bolt M10*30	8



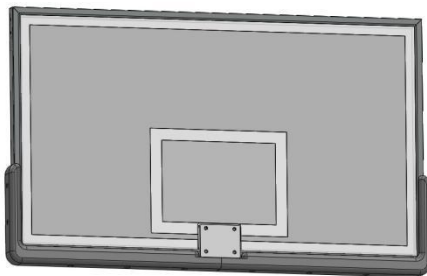
B4	GB/T 5781-2000	Hex Bolt M12*60	1
B5	GB/T 6172.1-2000	Hex nut M24	2
B6	GB/T 6172.1-2000	Hex nut M24	4
B7	GB/T 5780-2016	Hex bolt M16*120	1
B8	GB/T 12-1988	Carriage bolt M10*35	2
B9	GB/T 12-1988	Carriage Bolt M10*110	4
B10	GB/T 97.2-2002	Washer Ø8	47
B11	GB/T 97.2-2002	Washer Ø10	10
B12	GB/T 97.2-2002	Washer Ø16	2
B13	GB/T 93-1987	Locking washer Ø8	47
B14	GB/T 93-1987	Locking washer Ø10	4
B15	GB/T 6170-2000	Nylon nut M10	2
B16	GB/T 6170-2000	Nylon nut M16	1
B17	GB/T 6170-2000	Hex nut M12	1
B18	GB/T 6183.1-2016	Flange nut M10	4
B19	GB/T 77-2007	Flat head allen screw M6*6	4



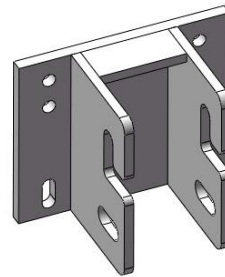
Base + Boom



Rim



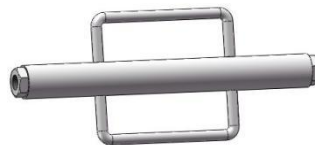
Backboard



Backboard connection plate



M20 Hook- Left



Pull/Push fix pole



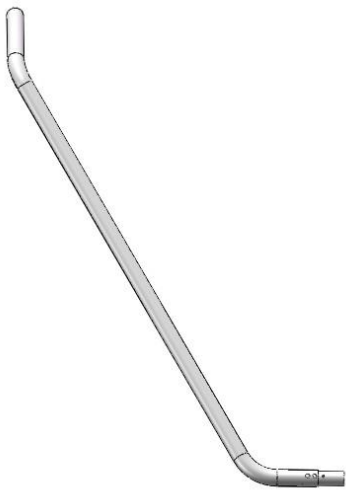
M20 Hook-Right



Adjust pole of Upper arm



Upper arm fix plate



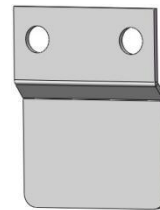
Upper arm-Left



Upper arm-Right



Upper arm fix plate (to pole)



Padding plug



Base side fix plate A



Base side fix plate B

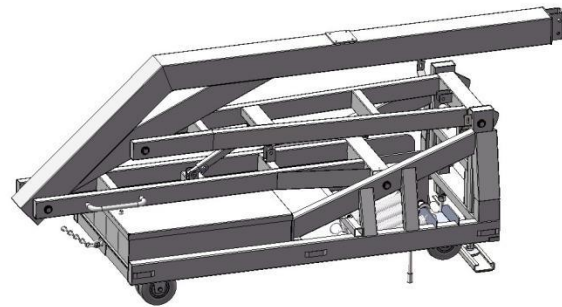




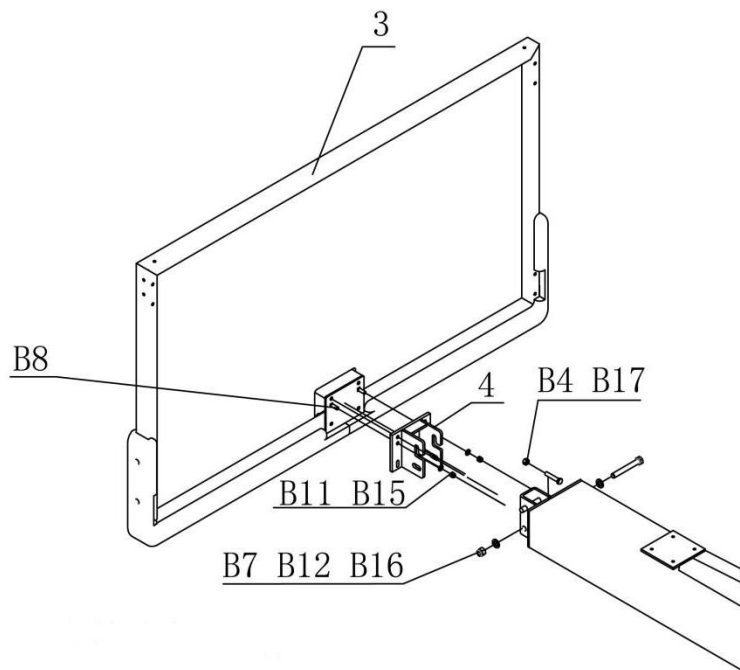


## Installation Steps:

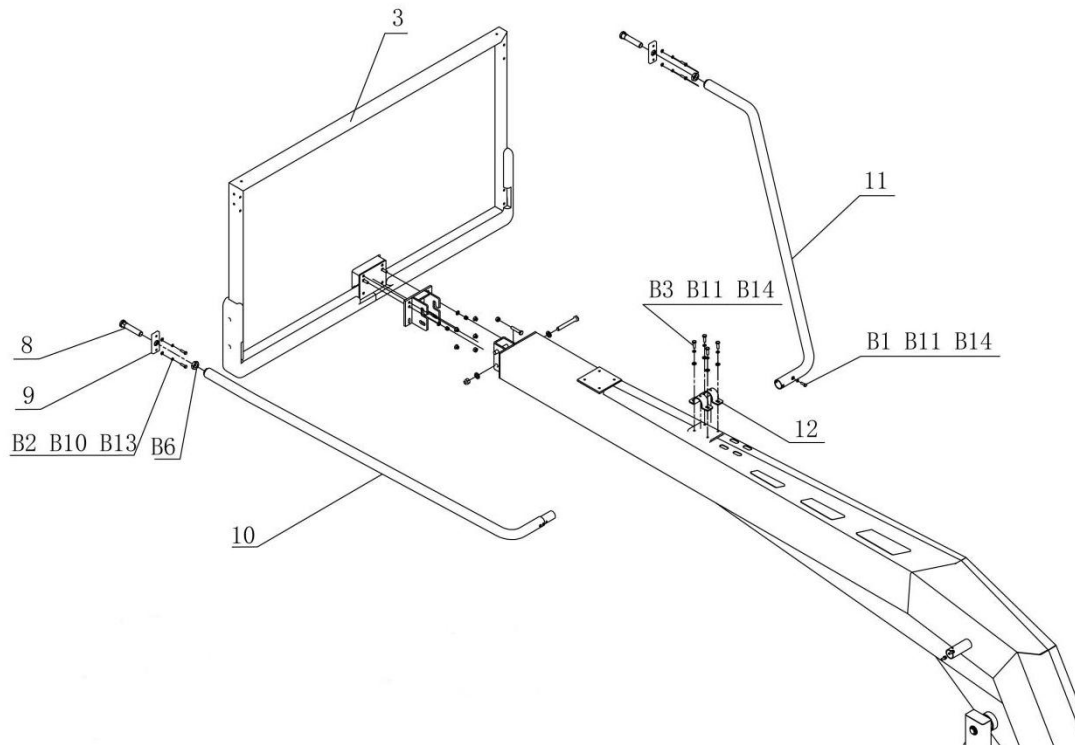
1. Remove the base + boom from pallet with forklift, keep the base folded.



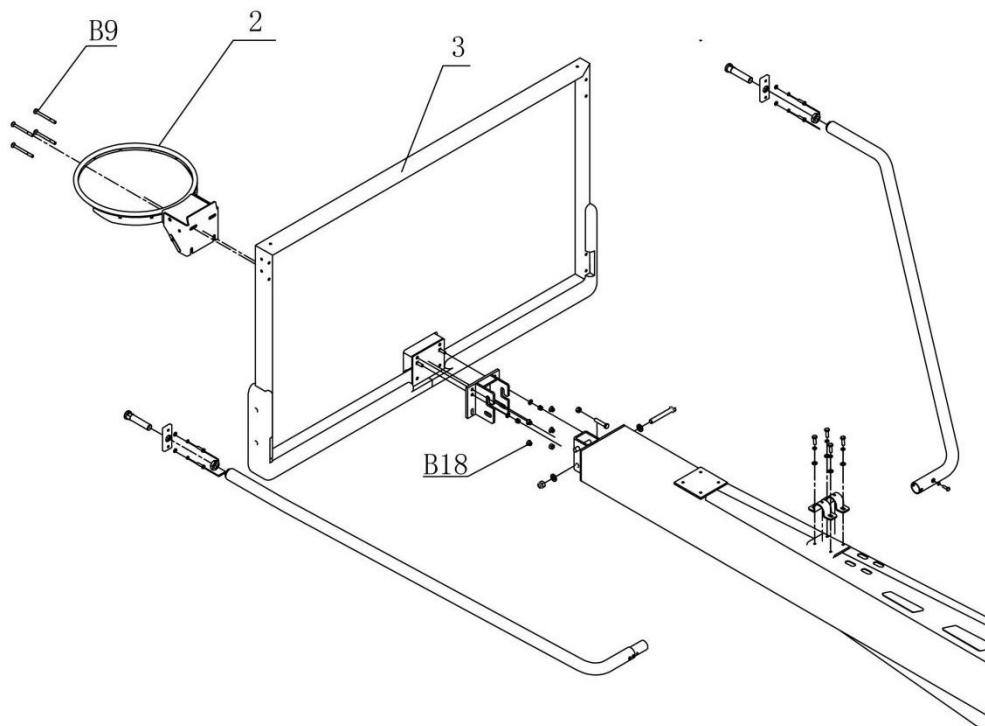
2. Install #4(Backboard connection plate) to pole beam with B7/B12/B16;  
Install #3(Backboard) to #4 with B8/B11/B15. Twist B4, adjust the  
backboard with right vertical through twist B4, then tight tightly B17.



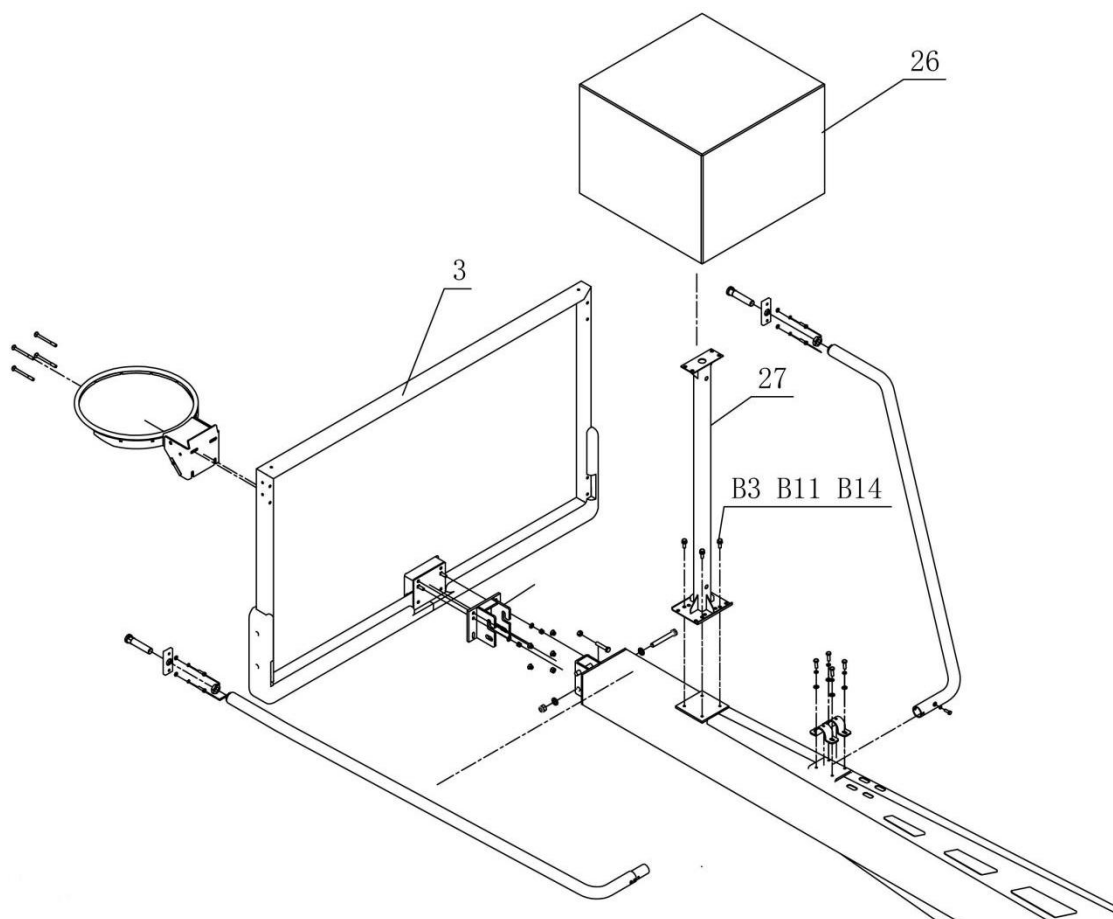
3. Install #8&#9 to #3(Backboard) with B2/B10/B13/B6 (2 sides), fix #10/#11 to #8 & #12, tight #10/#11 to #12 with B1/B11/B14,twist #8 to adjust Backboard in right horizontal & vertical level, then tight tightly with B6.



4. Install Rim (#2) to Backboard (#3) with B9/B18.

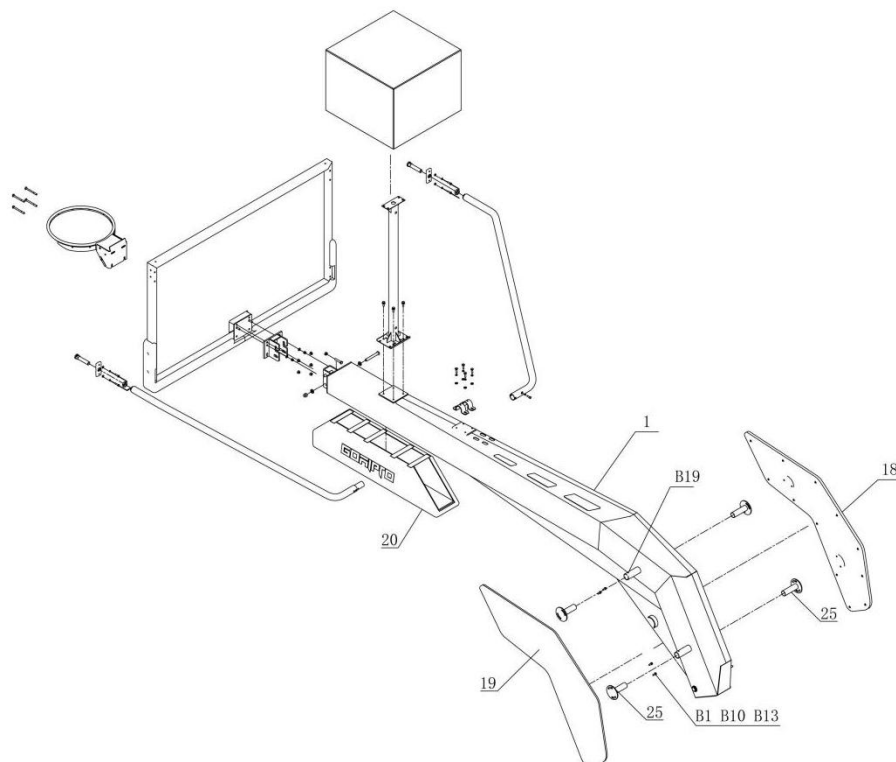


5. Install #27 (timber rod) to beam with B3/B11/B14, then connect #26.

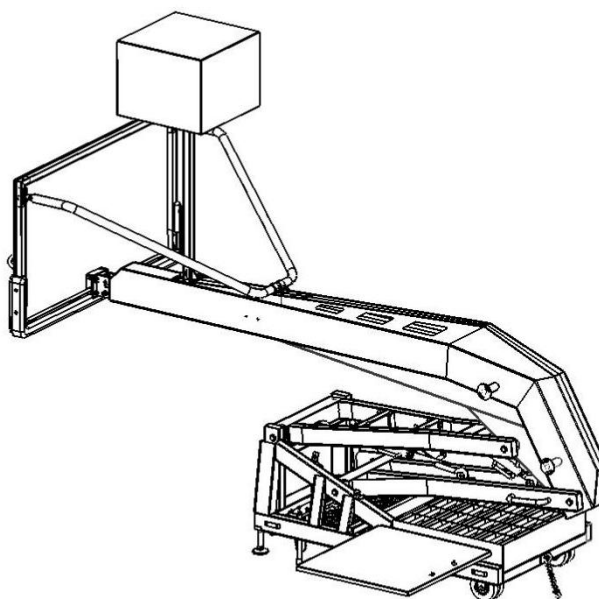


6. Fix #25 to #18/#19 with B1/B10/B13. Install #18/#19 to pivot beam with B19.

Install #20 to beam with velcro strap.

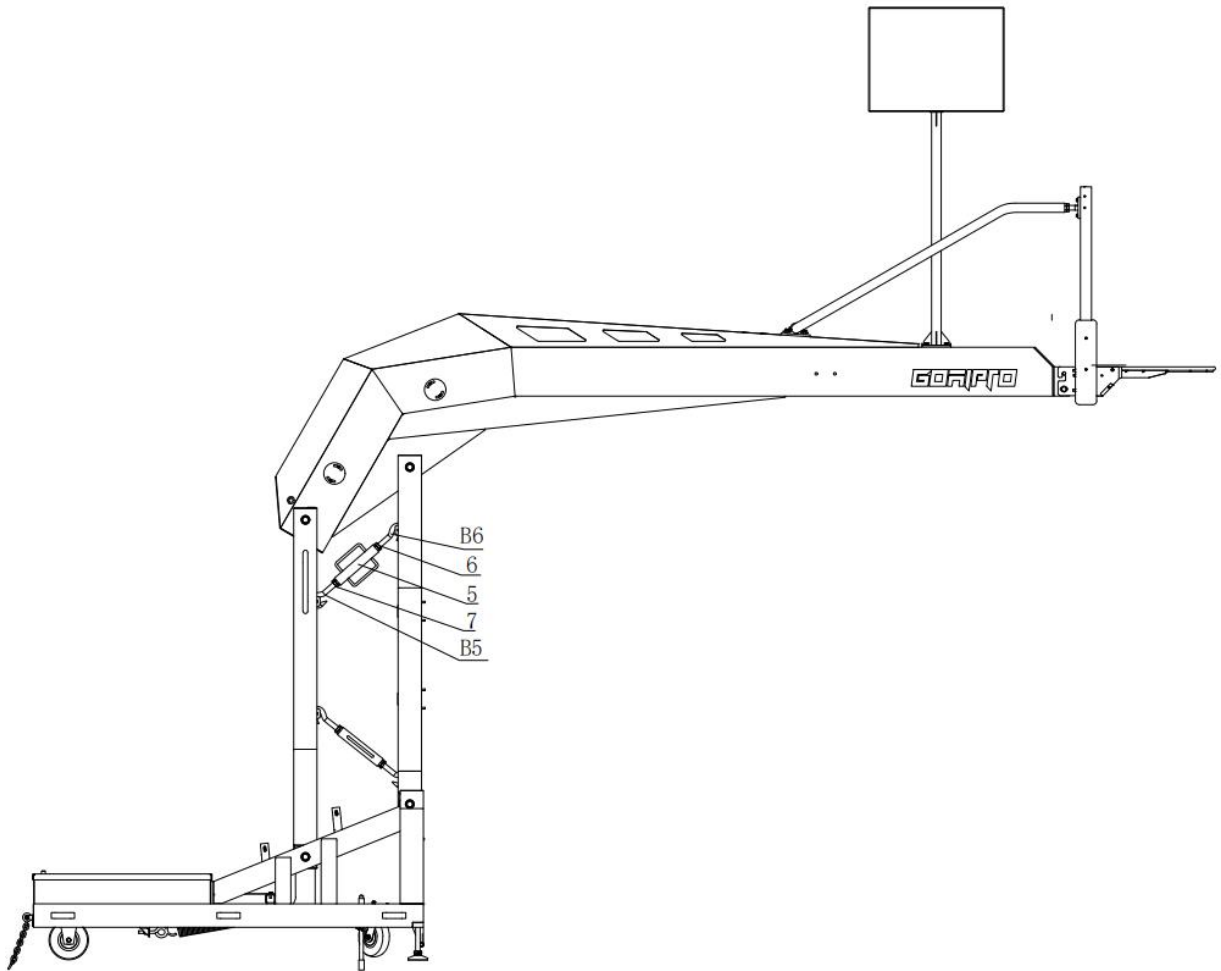


7. Loosen the black belt little bit, pull out the safety pin. Lift the boom pole little up, open the ballast, and put weights inside tanks.



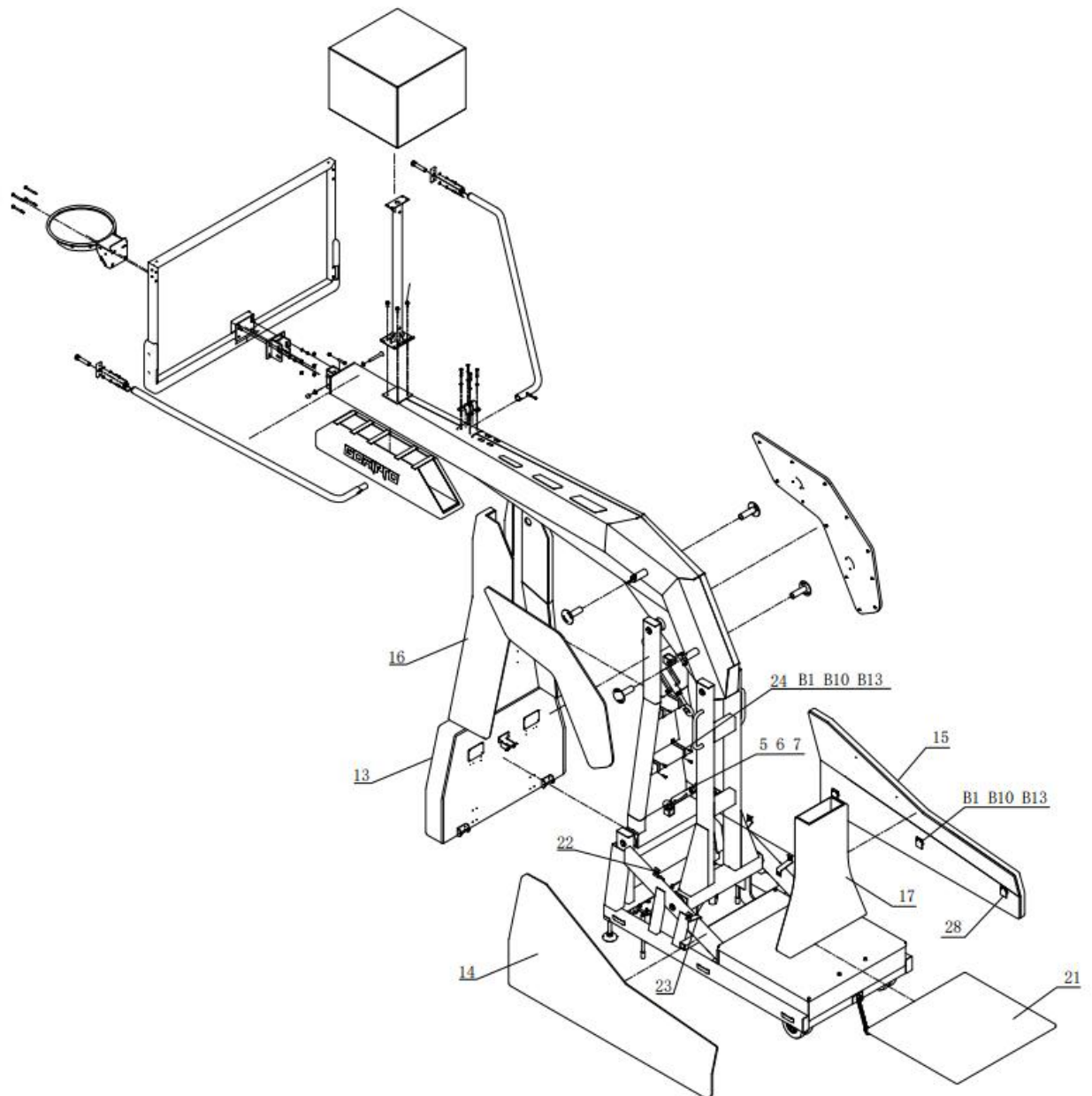


8. First crank the whole system needs two professional personnel, make sure the whole system full open and insert safety pin. Tighten with 5#, 6#, 7#, lock tight with B5, B6.



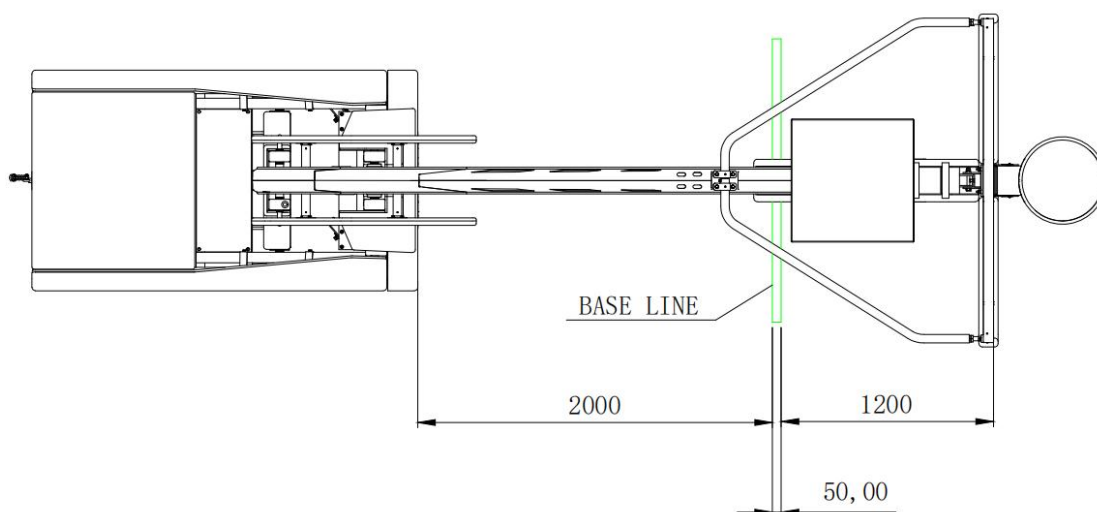


9. Install all pads #13/#14/#15/#16/#17/#21 as shown below:



10. Adjust the front bottom foot height to confirm the height from rim to ground in 3050mm.

Adjust the vertical distance in 1200mm as shown below:





**Warning:**

1. The spring of the backstop unit has been adjusted to a specific weight at our factory, so do not open the limit pin and black strap before installing the backstop unit.



2. After installing the backboard, you cannot directly stand the backstop unit upright. You need to first pull out the limit pin, open the black strip a little, lift the handle slightly with two people, take out the ballast cover, and put all the weights into the ballast before you can fully lift the backstop unit upright.





## **Operation:**

1. Before operating & installation, please read all precautions and information labels.
2. Place the backstop unit on court with the locating pin facing the socket in the floor.
3. Secure the chain behind the basketball hoop to the court floor.
4. Release the black strip, pull out the limit pin, and lift the backstops with the handle. Raise to the appropriate height (9 feet or 10 feet), insert the limit pin, install the pull/push fixing rod, and tighten it.
5. Measure the height from rim to the ground. If it is not appropriate, fold the backstop unit and adjust the front feet to the appropriate height. Lift the backstop unit in the same way and lock it.

## **Quality Warranty:**

- ▶ Backboard: 5 years
- ▶ Pole: Hot-dip galvanize + powder coating for Lifetime use
- ▶ Rim: 3 years
- ▶ Pole: 1-3 years (Indoor + Outdoor use)



## **Maintenance:**

1. The equipment should be thoroughly inspected during use to ensure that catastrophic failures do not occur during use between two annual inspections.
2. It is recommended to conduct an annual inspection to determine if there are any bolts or other hardware that are worn or loose.
3. During an annual inspection:
  - Check all connections to ensure they are securely fastened
  - Check all spring adjustment bolts to ensure they are securely fastened and no moving
  - Check if the pad is worn
  - Any loose bolts or nuts should be tightened
  - Replace any missing or worn parts